



# The ROVER COMPANY LTD. announce their continuation for 1932/3 of the successful policy of 1931/2 of **DISTINCTIVE COACHWORK**

by well-known Bodybuilders.

## THE NEW SPEED PILOT CHASSIS

will come in for special attention. A remarkable high speed car of £14 tax, incorporating floating power, easy change silent second, third and top gears, with free wheel and automatic re-starting, long wheelbase and frame under rear axle.

STANDARD MODELS.	Family 10	Special 10	Pilot
2-seater by Carbodies ..	£189	£228	£253
4-seater by Whittingham and Mitchel ..	£217	£247	£272
D-H 4-some Coupé by Maddox ..	£247	£277	£302
D-H Coupé and dicky by Grose ..	£250	£280	£305
Sports 4-door Saloon by Midland Light Bodies ..	—	£282	£307
Sports Coupé by Charlesworth ..	£265	£295	£320
Tickford Saloon by Salmons ..	—	£330	£355
	Meteor 16	Meteor 20	
4-seater Tourer by Patrick ..	£445	£465	
4-some D-H Coupé by Maddox ..	£490	£510	
Limousine de Luxe by Arthur Mulliner ..	£590	£610	

### SPEED PILOT.

2-seater Semi-Coupé by Carbodies ..	£310
Sports 4-seater by Carbodies ..	£310
D-D 4-some Coupé by Maddox ..	£350
Super-Sports Coupé and Super-Sports Saloon by Charlesworth ..	£375

### SPEED METEOR.

4-door Sports 4-seater by Patrick ..	£630
Low 4-door, 6-light Saloon by Midland Light Bodies ..	£675
4-some D-H Coupé by Maddox ..	£675
Sports Saloon de Luxe by James Young, of Bromley ..	£735

The programme is controlled by H. W. Allingham, M.I.Mech.E.

DETAILS FROM ALL ROVER AGENTS.

## "THE NEED FOR UPPER CYLINDER LUBRICATION IS NOT NEW," says DR. "CHEMICO"

Before the days of BENZOYLE ordinary engine oil was often put into the petrol to prevent destructive piston-friction. This, however, naturally caused heavy carbon deposit and did not possess the right properties for the job. The CORRECT oil for this important purpose, with high flash-point and negligible carbon deposit, is now available in the form of

## BENZOYLE

UPPER CYLINDER LUBRICANT

FROM MOST FILLING  
STATIONS:

16-oz. Tins	-	-	2/6
8-oz. Tins	-	-	1/6

or in ½ ounces from the Benzoyle  
Service Tanks at

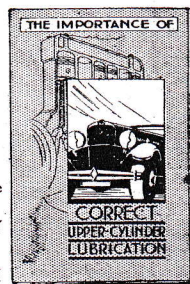
**ONE PENNY**

### DOSE

½ oz. in every  
2 gallons of  
petrol.

This Booklet will  
interest you.  
Ask your nearest  
"Chemico Car  
Clinic" or write  
direct to

THE COUNTY  
CHEMICAL  
CO. LTD.  
BIRMINGHAM





THE J.C.C. OPENS BROOKLANDS—continued from page 250.

H. C. Hunter (Riley), E. J. Jack (Riley), A. P. Squire (Riley), L. S. Fisher (Riley), E. N. Ward (Riley), H. J. Turner (Riley), A. H. Oxenford (Standard).

Over 1,100 c.c.—Capt. E. Jervis (Alvis), W. H. Porter (Alvis), Sir A. W. MacRobert (Aston Martin), L. Baynes (Austin), J. D. Firth (Bentley), Capt. D. K. Kirk (Bugatti), D. G. Evans (supercharged Bugatti), K. G. Gwynn (Buick), W. A. G. Beck (Chrysler), T. C. Mann (supercharged Lagonda), M. H. Selby (Lagonda), T. W. F. Windrum (Lea-Francis), J. W. Drewett (Lea-Francis), B. S. Clavering (M.G. Magna), L. H. Ashcroft Thompson (M.G. Magna), Miss A. Auterac (Morris-Oxford), G. L. Baker (Minerva), Major A. T. G.

Gardner (Rover), W. A. V. Davis (Standard), J. E. Williams (Standard), J. A. Peacock (Sunbeam), D. McNeil (Vauxhall), A. C. Hess (Wolseley Hornet).

THIRD-CLASS AWARDS (under 1,100 c.c.).—H. Metchim (Austin), M. P. Tenbosch (Austin), E. A. Denton (M.G. Midget), F. D. Cooper (M.G. Midget), E. Brooks (Riley), J. H. Fuller (Riley), T. A. Boardman (Riley), Miss K. Brunell (Triumph), J. A. Driskell (supercharged B.N.C.).

Over 1,100 c.c.—K. D. Evans (Alfa-Romeo), J. Reville (Alvis), M. H. Falkner (Alvis), M. H. Morris Goodall (Aston-Martin), Capt. W. L. Bain (Aston-Martin), J. Pollitzer (Bentley), Lt. P. Richards

Brown (Chrysler), R. G. J. Nash (supercharged Frazer-Nash), E. H. Dean (Hillman), Mrs. L. Garstin (supercharged Lagonda), W. G. Battersby (O.M.), D. Monro (Talbot).

NO AWARDS (under 1,100 c.c.).—M. H. Sprague (Austin), R. Froy (Austin), R. H. Warnes (M.G. Midget), A. J. Bochaton (Triumph), P. W. Sherrin (Vernon-Derby).

Over 1,100 c.c.—L. E. Marshall (Alvis), Rev. J. Hall Yarr (Alvis), C. E. Child-Freeman (Bentley), H. J. Aldington (supercharged Frazer-Nash), A. S. Martin Pratt (Frazer-Nash), A. W. Smith (M.G. Magna), E. L. Clarke (Rover).

## A Midlands Sports Depot.

IN all parts of the country the cult of the sports car has been noticeably on the upward trend during the past few years, and in no area is it more popular nowadays than in the Midlands.

In consequence a great number of motor trading concerns are devoting increasing attention to the sales and service of types which find favour with the sporting enthusiast.

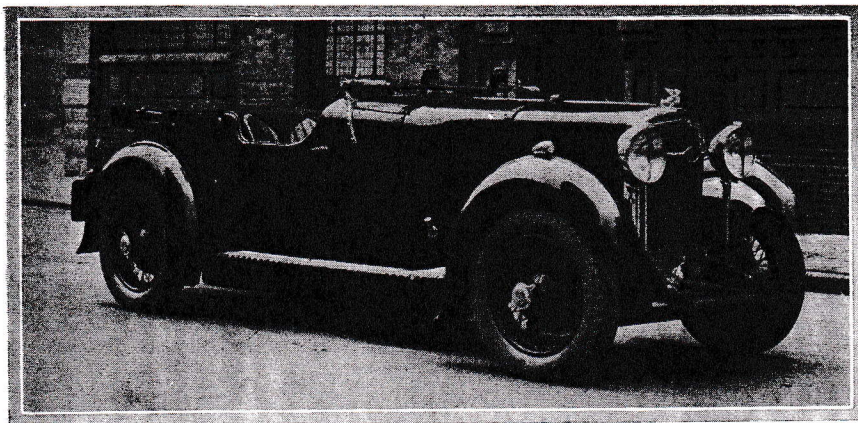
"Recently," writes a MOTOR SPORT representative, "I paid a visit to the premises of Patrick Motors Ltd., at 479-481, Bristol Road, Bournebrook, Birmingham. This firm are the Midland distributors for such thoroughbreds as Aston-Martin, Alfa-Romeo and Lanchester cars, and I found their showrooms un-

usually interesting in having an extraordinarily full range of sports cars on view. Here the visitor will find various examples of the Wolseley Hornet-Patrick Special, sports Triumphs and a number of other attractive models of various types and power."

Patrick Motors Ltd., are primarily sports body specialists, and an inspection of their works is well worth while. They are, at present, extremely busy turning out a large batch of bodies for the new Triumph sports model, the "Southern Cross," and a number of special jobs are in hand for individual orders.

The principal of the concern, Mr. Patrick, is himself a great enthusiast for the sporting side of motoring, and is a frequent participant in trials and other events.

## AN ATTRACTIVE SPEED SIX.



by the high finish and attention to detail.

The price of £495 for the four-seater is the same as the standard model, and the arrangement of seating and equipment is very generous. Pneumatic upholstery is fitted throughout with good room in the rear seat, and deep foot wells. The very wide doors opening at the front give easy access to the instantly adjustable front seats, and the weather protection is very complete. The screens and tool locker are neatly fitted behind the rear squab, while items of equipment include a Blue-mel spring steering wheel, large door pockets, and twin electric windscreen wipers. The screen, as on other Abbey bodies, can either fold flat on the scuttle or open from the top when the hood is up, a very good point in foggy weather.

With its proved excellent performance this luxurious yet not expensive car should be in great demand among those who wish to travel fast in comfort, and without fuss and noise, and we have no doubt that the season will see many of them on the road.

MANY of the best things in this world are quite sudden and unexpected, and the advent of the speed model Rover was one of these. Without any particular warning an edition of the 20 h.p. chassis suddenly appeared last season and proceeded to show that it was a really fast motor car, and at the same time extremely pleasant and quiet. In these days of hopeful speedometers it was pleasing to find such a car whose speed was no myth, and when one of these

models in the M.C.C. high speed trial covered over 84 miles in the level hour, motorists began to realise that here was a chassis worth looking into. Its development has been due to the energy and foresight of Mr. Sydney Cummings, and his firm have now produced a further model of this car with very attractive Abbey coachwork.

We had an opportunity of closely examining one of these cars recently in their showrooms in the Fulham Road, and were greatly impressed