

# Stearns

THE ULTIMATE CAR



THE F.B. STEARNS COMPANY  
CLEVELAND, OHIO



KNIGHT  
TYPE  
MOTOR  
❖

*Issued August, 1913*

**THE F. B. STEARNS COMPANY**  
CLEVELAND, OHIO, U. S. A.

BRANCHES AND DEALERS IN ONE  
HUNDRED AND TWENTY-FIVE CITIES



straight-line body, forming one unbroken surface from front to back of car, constitute the finest possible example of the stream-line type of body which has attained so great a vogue in Europe. The exterior finish and the interior trimming and appointments leave nothing to be desired. The deep, thick upholstery and careful detail finish surpass even former Stearns models in luxury. The folding-arm chair type of auxiliary seat used in seven-passenger models is the finest example of its kind. The upholstered arms fold up with the seat, and the whole chair is quickly folded out of the way when not in use. Spacious pockets are provided in the tonneau, and many other appointments aid in enhancing the pleasure of motoring.

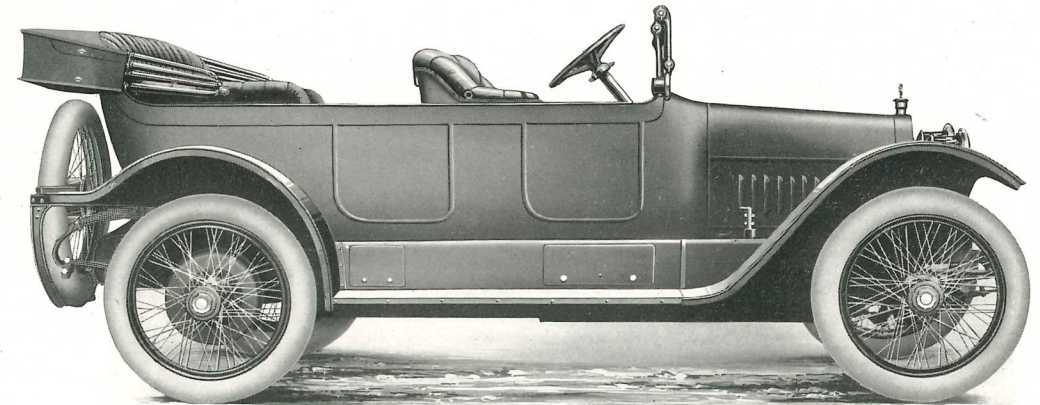
Pantasote has been substituted for silk mohair as standard top material, giving the top a smooth, rich appearance in keeping with the balance of the car. The three-, four- and six-passenger models have tops especially designed for quick handling, and all models carry a full equipment of side and interior curtains.

An important improvement has been effected in the method of carrying tools and tire equipment where they will be easily and quickly accessible and yet not in the way. Two tool compartments have been placed underneath the body, the covers being located over the running boards below the front seats. This is but one of several refinements in detail construction worked out for the greater convenience of the owner.

In mechanical construction the new models show no noteworthy changes from the design so successfully employed during the past two years, except that in the four-cylinder models the transmission has been moved forward from the rear axle to amidships—the same construction that has been employed in the six-cylinder models since their inception.

There have been no changes in the motors beyond those occasioned by the adoption of left-hand drive. The bore and stroke remain the same as last season— $4\frac{1}{4} \times 5\frac{1}{2}$  inches in the four-cylinder type and  $4\frac{1}{4} \times 5\frac{3}{4}$  inches in the six-cylinder.

To be brief, the changes embodied in the new models are those which add to the convenience and comfort of the motorist, rather than deviations from the mechanical design which has proved its superiority in two years of hard service.



*Stearns-Knight Four-Cylinder  
Five-Passenger Touring Car  
(Wire Wheels Extra)*

## SPECIFICATIONS

*Four-Cylinder  
Five-Passenger Touring Car*

*Wheel Base . . . . . 121 inches*

*Tires . . . 36 x  $4\frac{1}{2}$  inches all around*

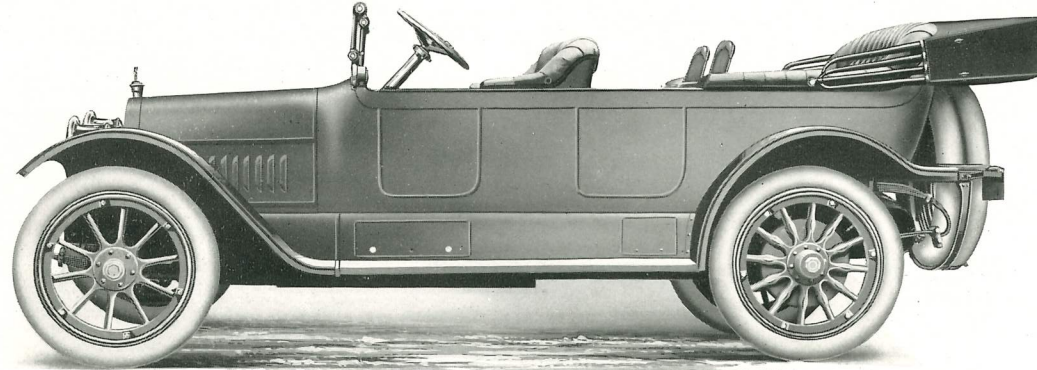
*Price . . . . . \$3750*

*Colors . . . . . Blue, Maroon, Green*

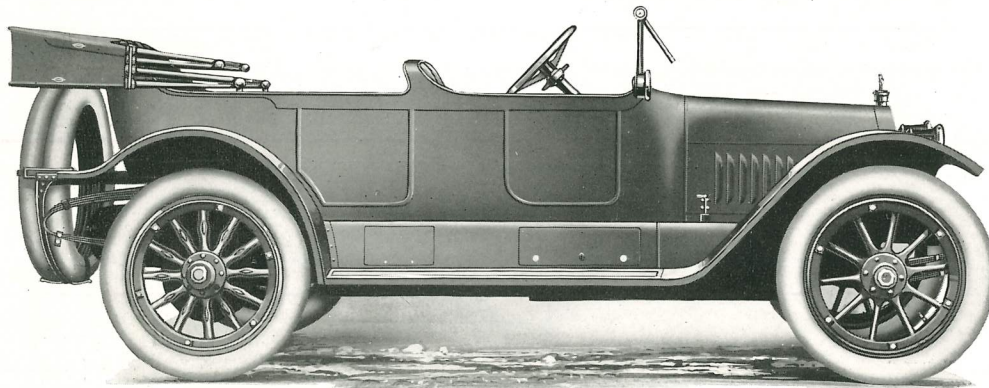
*Equipment:* Gray & Davis electric starting and lighting system, speedometer, windshield, Klaxon horn, Pantasote top, slip cover and curtains, Q. D. demountable rims (two extra rims), etc.

*Options:* Wire wheels (one extra wheel), \$150 additional. Worm drive axle, \$100 additional.





*Stearns-Knight Four-Cylinder  
Seven-Passenger Touring Car*



*Stearns-Knight Four-Cylinder  
Four-Passenger Light Touring Car*

## SPECIFICATIONS

### *Four-Cylinder Seven-Passenger Touring Car*

Wheel Base . . . . . 127 inches  
 Tires . . . . . { 36 x 4½ inches front  
 { 37 x 5 inches rear  
 Price . . . . . \$3900  
 Colors . . . . . Blue, Maroon, Green  
 Equipment: Gray & Davis electric starting and lighting system, speedometer, windshield, Klaxon horn, Pantasote top, slip cover and curtains, Q. D. demountable rims (two extra rims), etc.  
 Options: Wire wheels (one extra wheel), \$150 additional. Worm drive axle, \$100 additional.

### *Four-Cylinder Four-Passenger Light Touring Car*

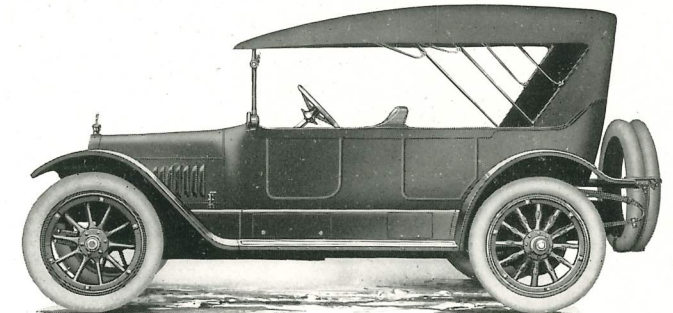
Wheel Base . . . . . 121 inches  
 Tires . . . . . 36 x 4½ inches all around  
 Price . . . . . \$3750  
 Colors: Blue, Maroon, Green, Battleship Gray, York Gray.  
 Equipment: Gray & Davis electric starting and lighting system, speedometer, windshield, Klaxon horn, Pantasote top, slip cover and curtains, Q. D. demountable rims (two extra rims), etc.  
 Options: Wire wheels (one extra wheel), \$150 additional. Worm drive axle, \$100 additional.

### *Four-Cylinder Six-Passenger Touring Car*

Chassis specifications and price same as the seven-passenger model; body specifications same as the six-cylinder six-passenger Touring Car illustrated on page ten.

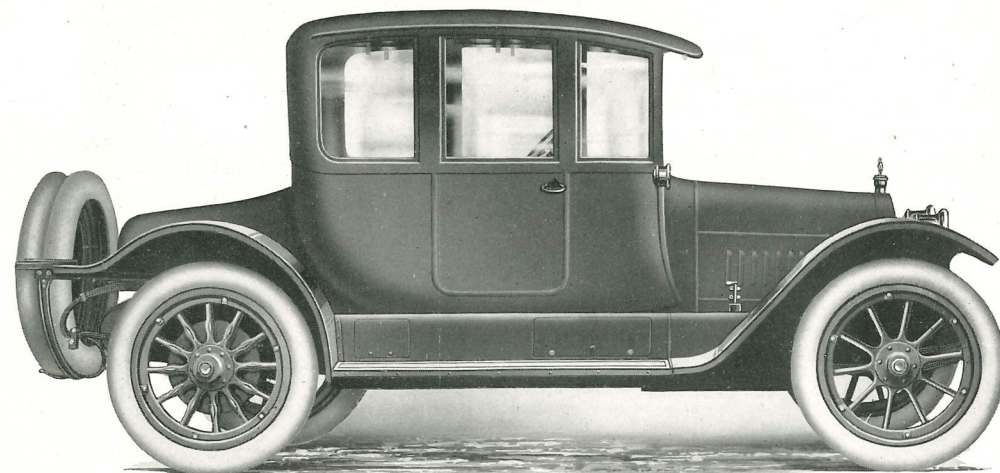
### *Four-Cylinder Three-Passenger Roadster*

Chassis specifications and price same as the four-passenger Light Touring Car; body specifications same as the six-cylinder Roadster illustrated on page twelve



*Stearns-Knight  
Four-Cylinder  
Four-Passenger  
Light Touring Car  
showing Special Top*





*Stearns-Knight Four-Cylinder Coupe*

## SPECIFICATIONS

### *Four-Cylinder Coupe*

Wheel Base . . . . . 121 inches  
 Tires . . . 36 x 4½ inches all around  
 Price . . . . . \$4450  
 Colors . . . Blue, Maroon, Green

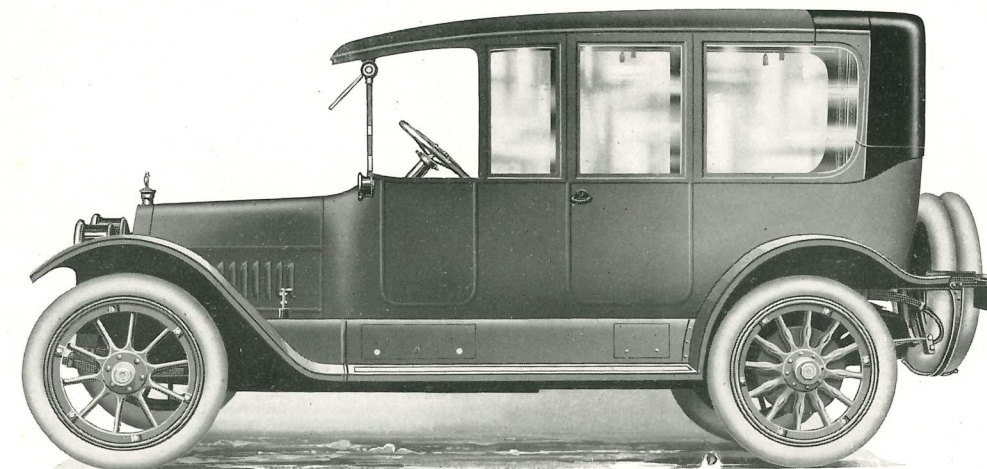
*Equipment:* Gray & Davis electric starting and lighting system, speedometer, Klaxon horn, Q. D. demountable rims (two extra rims), complete interior equipment, etc.

*Options:* Wire wheels (one extra wheel), \$150 additional. Worm drive axle, \$100 additional.

### *Four-Cylinder Sedan*

Chassis specifications same as the Coupe model; body specifications same as the six-cylinder Sedan illustrated on page fifteen.

Price . . . . . \$5000



*Stearns-Knight Four-Cylinder Landaulet*

## SPECIFICATIONS

### *Four-Cylinder Landaulet*

Wheel Base . . . . . 127 inches  
 Tires . . . { 36 x 4½ inches front  
                   { 37 x 5 inches rear  
 Price . . . . . \$5100  
 Colors . . . Blue, Maroon, Green

*Equipment:* Gray & Davis electric starting and lighting system, speedometer, Klaxon horn, Q. D. demountable rims (two extra rims), complete interior equipment, etc.

*Options:* Wire wheels (one extra wheel), \$150 additional. Worm drive axle, \$100 additional.



## SPECIFICATIONS

### Six-Cylinder Seven-Passenger Touring Car

Wheel Base . . . . . 140 inches  
Tires . . . . . 37 x 5 inches all around  
Price . . . . . \$5000  
Colors . . . . . Blue, Maroon, Green

Equipment: Gray & Davis electric starting and lighting system, speedometer, windshield, Klaxon horn, Pantasote top, slip cover and curtains, Q. D. demountable rims (two extra rims), etc.

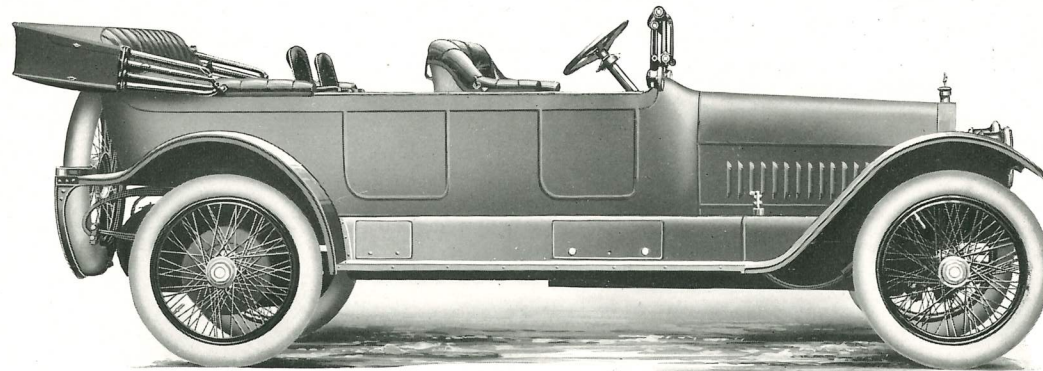
Options: Wire wheels (one extra wheel), \$150 additional. Worm drive axle, \$100 additional.

### Six-Cylinder Six-Passenger Touring Car

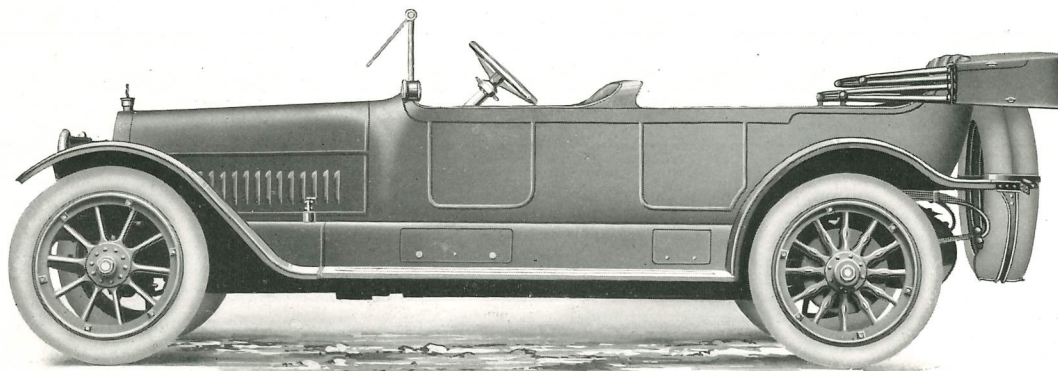
Wheel Base . . . . . 140 inches  
Tires . . . . . 37 x 5 inches all around  
Price . . . . . \$5000  
Colors: Blue, Maroon, Green, Battleship Gray, York Gray.

Equipment: Gray & Davis electric starting and lighting system, speedometer, windshield, Klaxon horn, Pantasote top, slip cover and curtains, Q. D. demountable rims (two extra rims), etc.

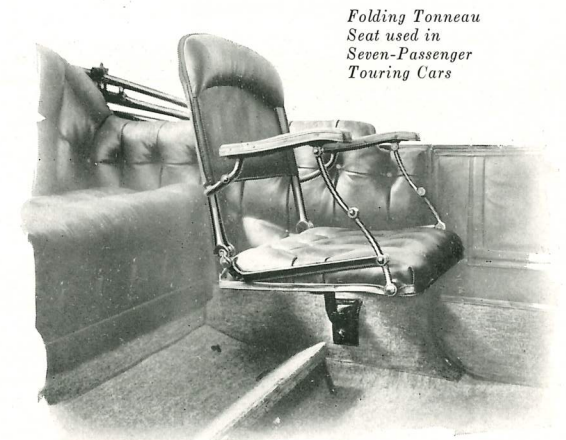
Options: Wire wheels (one extra wheel), \$150 additional. Worm drive axle, \$100 additional.



*Stearns-Knight Six-Cylinder  
Seven-Passenger Touring Car  
(Wire Wheels Extra)*

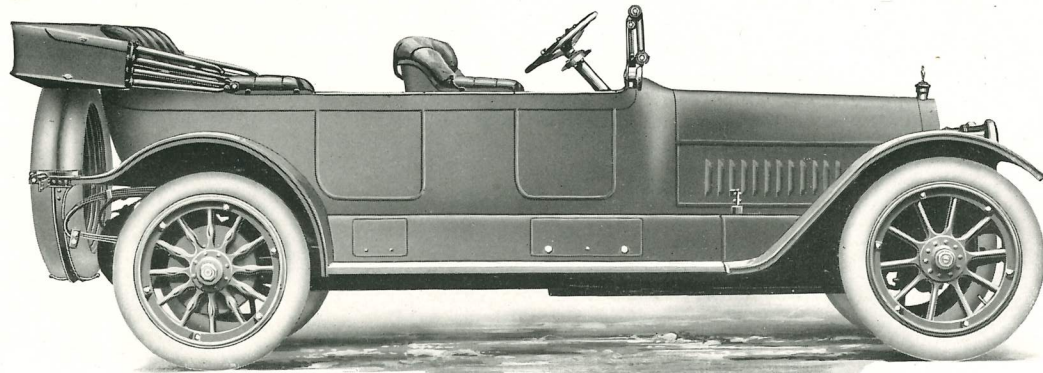


*Stearns-Knight Six-Cylinder  
Six-Passenger Touring Car*

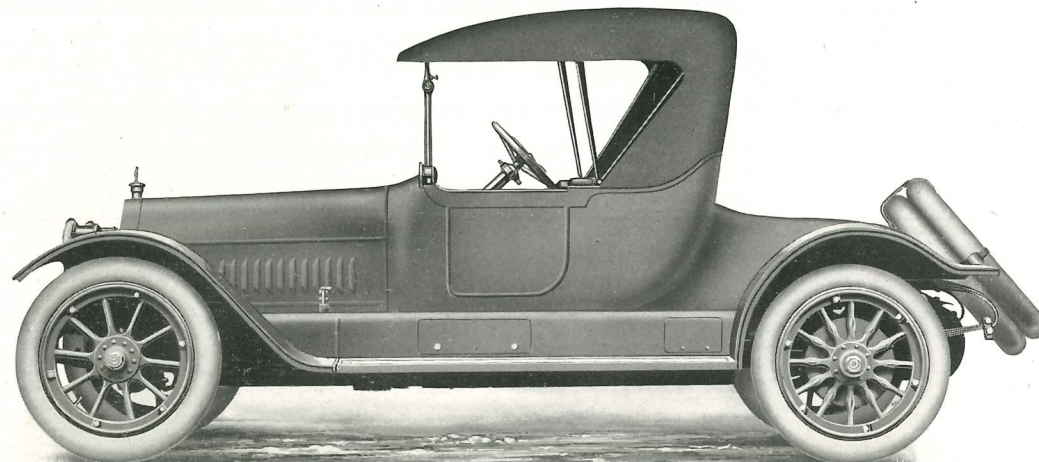


*Folding Tonneau  
Seat used in  
Seven-Passenger  
Touring Cars*





*Stearns-Knight Six-Cylinder  
Five-Passenger Touring Car*



*Stearns-Knight Six-Cylinder  
Three-Passenger Roadster*

## SPECIFICATIONS

### *Six-Cylinder Five-Passenger Touring Car*

*Wheel Base* . . . . . 134 inches  
*Tires* . . . . . 37 x 5 inches all around  
*Price* . . . . . \$4850  
*Colors* . . . . . Blue, Maroon, Green

*Equipment:* Gray & Davis electric starting and lighting system, speedometer, windshield, Klaxon horn, Pantasote top, slip cover and curtains, Q. D. demountable rims (two extra rims), etc.

*Options:* Wire wheels (one extra wheel), \$150 additional. Worm drive axle, \$100 additional.

### *Six-Cylinder Three-Passenger Roadster*

*Wheel Base* . . . . . 134 inches  
*Tires* . . . . . 37 x 5 inches all around  
*Price* . . . . . \$4850  
*Colors:* Blue, Maroon, Green, Battleship Gray, York Gray.

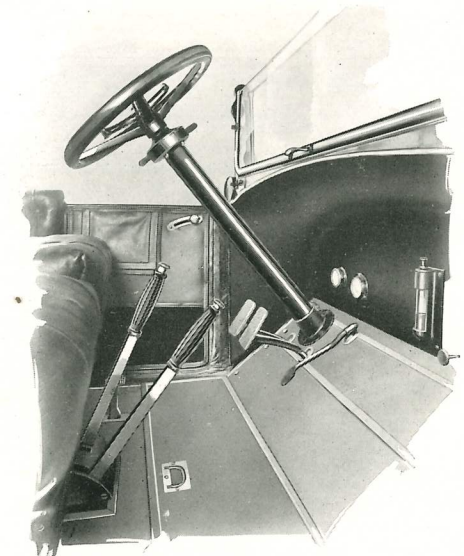
*Equipment:* Gray & Davis electric starting and lighting system, speedometer, windshield, Klaxon horn, Pantasote top, slip cover and curtains, Q. D. demountable rims (two extra rims), etc.

*Options:* Wire wheels (one extra wheel), \$150 additional. Worm drive axle, \$100 additional.

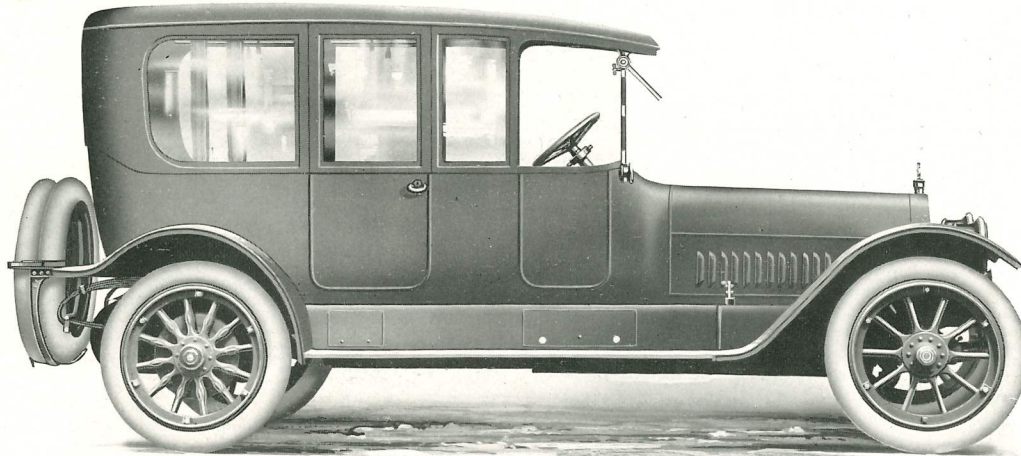
### *Six-Cylinder Four-Passenger Light Touring Car*

Chassis specifications and price same as the Roadster model; body specifications same as the four-cylinder four-passenger Light Touring Car illustrated on page six.

*View showing  
Left-Hand Drive,  
Center Shifting and  
Brake Levers and  
Steering Column  
Control*







*Stearns-Knight Six-Cylinder Limousine*

## SPECIFICATIONS

### *Six-Cylinder Limousine*

Wheel Base . . . . . 140 inches  
 Tires . . . . . 37 x 5 inches all around  
 Price . . . . . \$6100  
 Colors . . . . . Blue, Maroon, Green

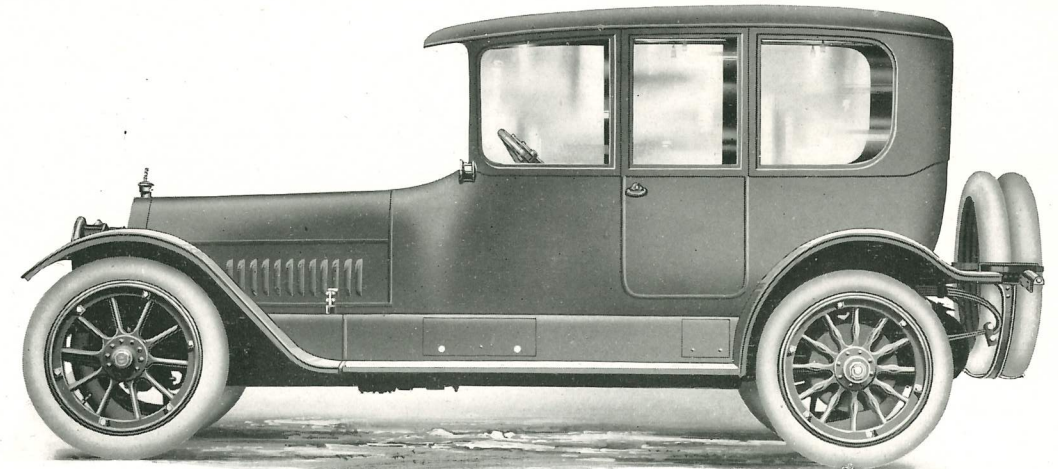
*Equipment:* Gray & Davis electric starting and lighting system, speedometer, Klaxon horn, Q. D. demountable rims (two extra rims), complete interior equipment, etc.

*Options:* Wire wheels (one extra wheel), \$150 additional. Worm drive axle \$100 additional.

### *Six-Cylinder Landaulet*

Chassis specifications same as the Limousine model; body specifications same as the four-cylinder Landaulet illustrated on page nine.

Price . . . . . \$6200



*Stearns-Knight Six-Cylinder Sedan*

## SPECIFICATIONS

### *Six-Cylinder Sedan*

Wheel Base . . . . . 134 inches  
 Tires . . . . . 37 x 5 inches all around  
 Price . . . . . \$6100  
 Colors . . . . . Blue, Maroon, Green

*Equipment:* Gray & Davis electric starting and lighting system, speedometer, Klaxon horn, Q. D. demountable rims (two extra rims) complete interior equipment, etc.

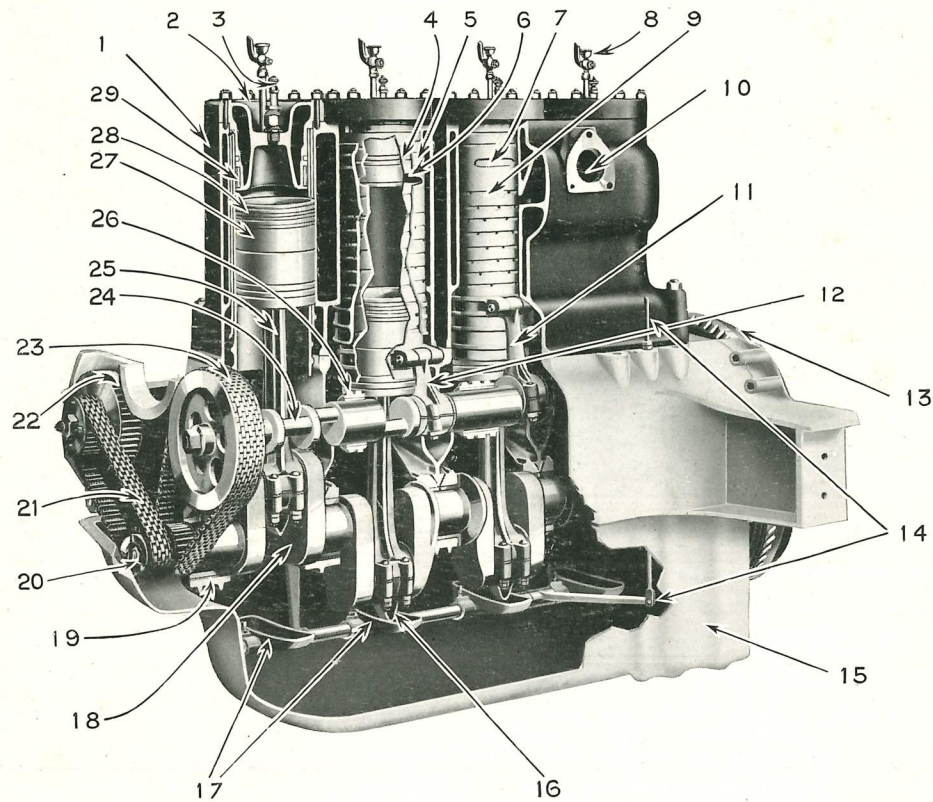
*Options:* Wire wheels (one extra wheel), \$150 additional. Worm drive axle, \$100 additional.

### *Six-Cylinder Coupe*

Chassis specifications same as the Sedan model; body specifications same as the four-cylinder Coupe illustrated on page eight.

Price . . . . . \$5550





**Sectional View of Stearns-Knight Four-Cylinder Motor**

- |   |  |   |
|---|--|---|
| 1. Cylinder                               | 13. Fly wheel  | 22. Silent chain driving sprocket for electric generator (on 4-cylinder models) |
| 2. Water-jacketed cylinder head           | 14. Oil trough adjusting lever connected to throttle                   | 23. Silent chain drive for eccentric shaft                                      |
| 3. Spark plug                             | 15. Lower part of crank case, containing oil pump, strainer and piping | 24. Eccentric shaft   |
| 4. Inner sleeve                           | 16. Oil scoop  | 25. Connecting rod  |
| 5. Outer sleeve                           | 17. Adjustable oil troughs   | 26. Bearing for eccentric shaft   |
| 6-7. Port openings in sleeves             | 18. Crank shaft  | 27. Piston  |
| 8. Priming cup                            | 19. Crank shaft bearing  | 28. Piston rings  |
| 9. Oiling grooves in sleeves              | 20. Starting clutch  | 29. Cylinder-head ring (junk ring)  |
| 10. Port opening in cylinder              | 21. Silent chain drive for magneto shaft                               |   |
| 11. Connecting rod operating outer sleeve |  |   |
| 12. Connecting rod operating inner sleeve |  |   |