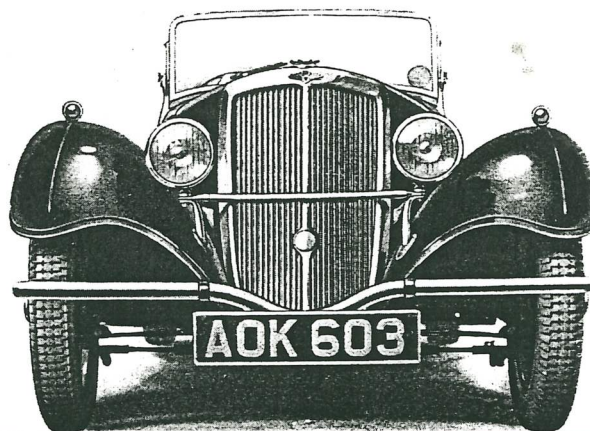


The
BSA
SCOUT



The B.S.A. SCOUT

Here's a snappy car that will appeal particularly to Sportsmen and Sportswomen. It has already achieved great popularity, because, while comparatively new, it is not an untried car, the engine, transmission, etc., having been fully proved in the hands of the public during the past four years.

It is designed on clean modern low-built sporting lines. Its acceleration, top-gear performance, road-holding and cornering are a revelation.

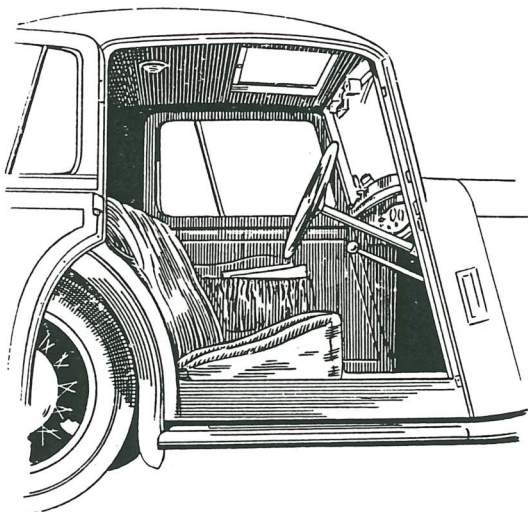
Delightfully smart and pleasing in appearance, outstanding in performance, tried and proved, and backed by the name

B.S.A., the B.S.A. Scout is a car that will make its owner the envy of many other motorists.

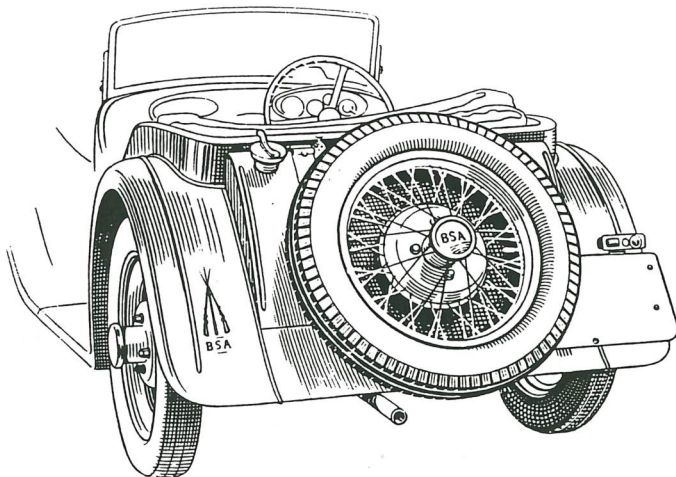


The B.S.A. SCOUT

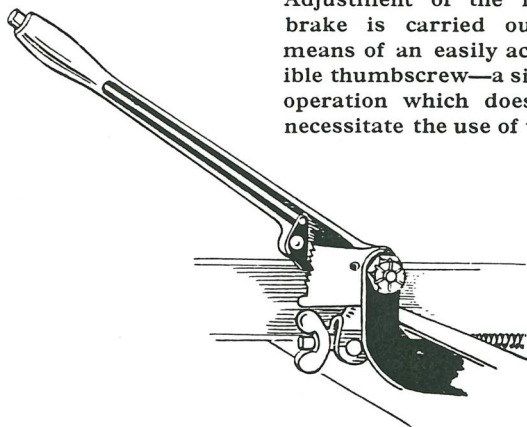
Some features that provide maximum comfort combined with smart appearance.



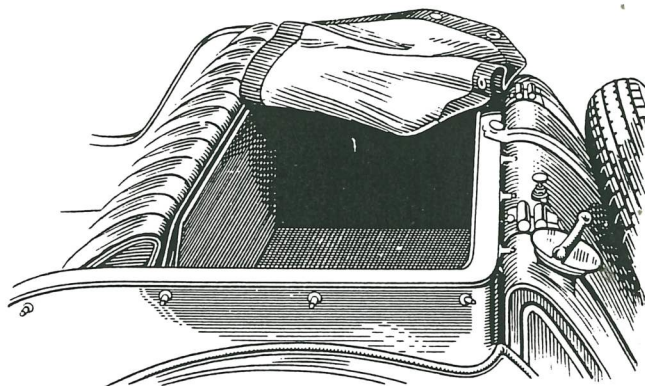
A feature of the 10 h.p. Coupé is the wide door opening. Interior is designed to provide ample head and leg room for the tallest persons, whilst the specially designed pneumatic upholstery provides luxurious seating for two full sized adults.



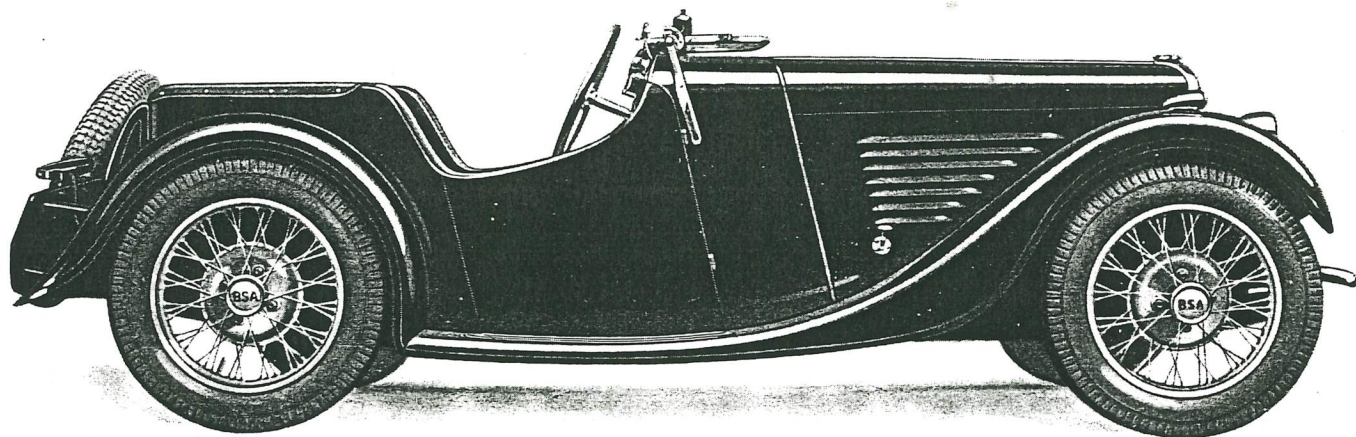
Rear view of the two-seater, showing the large capacity petrol tank with quick release filler cap and reserve supply tap.



Adjustment of the hand-brake is carried out by means of an easily accessible thumbscrew—a simple operation which does not necessitate the use of tools.



On the two-seater models there is ample luggage accommodation in the capacious and easily accessible tonneau behind the seat squab.



The B.S.A. SCOUT

9 h.p. Two Seater

Low-built, roomy, two-seater body built on modern sporting lines with frame of selected ash panelled in aluminium. Flat floor, understrutted. Two wide cut-away doors with cord-operated locks and capacious pockets. Pneumatic upholstery for seat with shaped squab for maximum comfort. Ample luggage space in tonneau behind squab, with tonneau cover. Neat folding hood completely concealed when down. Single panel safety glass folding windscreen with curved top line. One-piece detachable sidescreens stored behind squab. Low bonnet line giving maximum driving vision. Facia board with instrument panel on driver's side; large cubby hole on left.

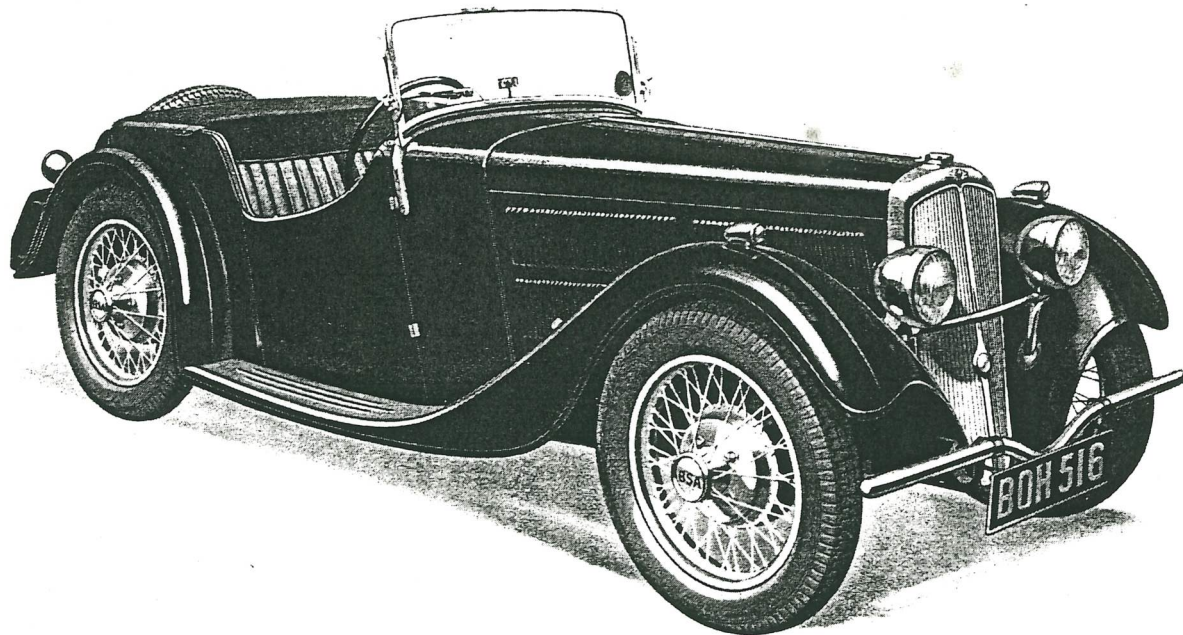
Finish: black cellulose with black or silver wheels and black upholstery, hood and tonneau cover. Chromium plated fittings.

Overall length, 11 ft. 3 ins.; Overall width, 4 ft. 9 ins.; Height over hood, 4 ft. 6 ins.; Turning circle, 40 ft.; Weight approx., 11½ cwt.

Tonneau.—Width, 32 ins. min., 38 ins. max.; Squab to back, top, 11 ins. min., 13 ins. max.; bottom, 18 ins.; Depth, 17 ins.

£149. 10s.

Ex Works



The B.S.A. SCOUT

10 h.p. Two Seater

Low-built, roomy, two-seater body built on modern sporting lines with frame of selected ash panelled in aluminium. Flat floor, understrutted. Two wide cut-away doors with cord-operated locks and capacious pockets. Pneumatic upholstery for seat with shaped squab for maximum comfort. Ample luggage space in tonneau behind squab, with tonneau cover. Neat folding hood completely concealed when down. Single panel safety glass folding windscreen with curved top line. One-piece detachable sidescreens stored behind squab. Low bonnet line giving maximum driving vision. Facia board with instrument panel on driver's side; large cubby hole on left.

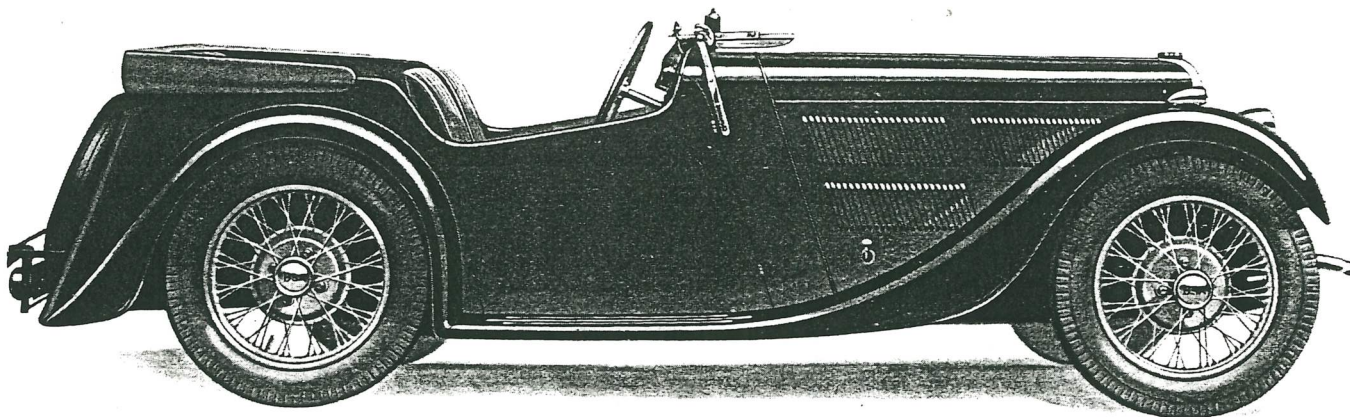
Finish: black with black, red, green or silver wheels, black, red or green upholstery, black hood and tonneau cover; green with green, black or silver wheels, green upholstery; red with red, black or silver wheels, red upholstery. Chromium plated fittings.

Overall length, 11 ft. 3 ins.; Overall width, 4 ft. 9 ins.; Height over hood, 4 ft. 6 ins.; Turning circle, 40 ft.; Weight approx., 11½ cwts.

Tonneau.—Width, 32 ins. min., 38 ins. max.; Squab to back, top, 11 ins. min., 13 ins. max.; bottom, 18 ins.; Depth, 17 ins.

£157. 10s.

Ex Works



The B.S.A. SCOUT

10 h.p. Four Seater

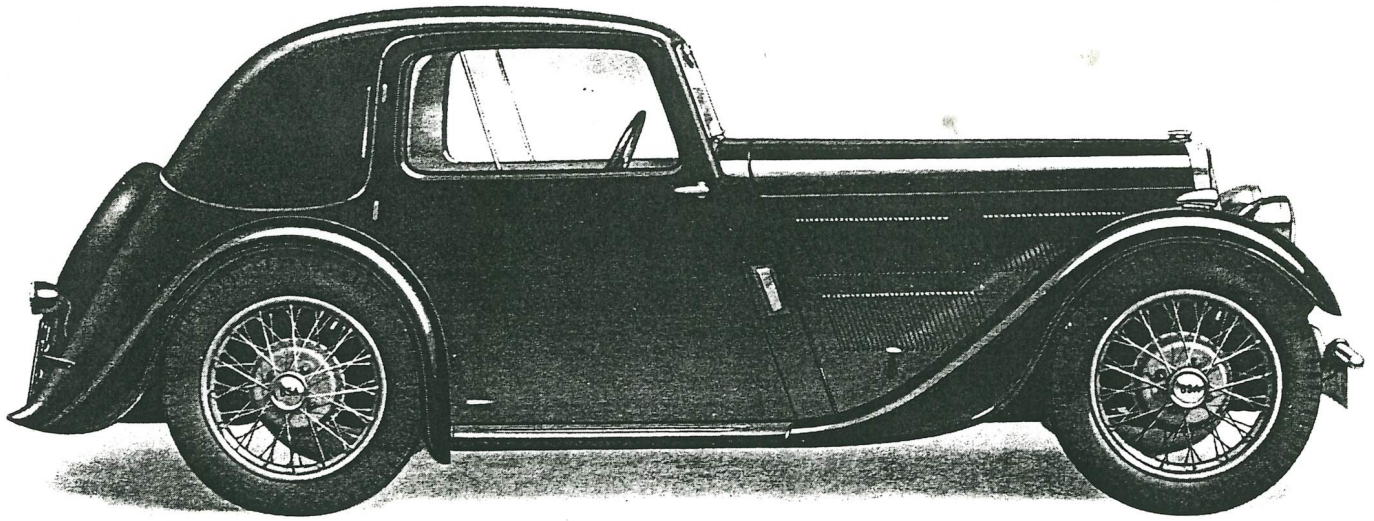
Low-built, roomy, four seater body designed on modern sporting lines. Two adjustable front bucket seats with folding backs, shaped for maximum comfort. Full width rear seat with deep well, giving ample leg room. Neat hood folding flat. Tonneau cover. Single panel safety glass folding windscreen with curved top line. Detachable sidescreens, stored behind rear seat squab. Folding luggage grid. Low bonnet line giving maximum driving vision. Rear petrol tank. Facia board with large instrument panel on driver's side and parcel compartment on left. Full set of instruments including petrol gauge and clock, with interior illumination.

Finish : black with black, red, green or silver wheels, black, red or green upholstery, black hood and tonneau cover ; green with green, black or silver wheels, green upholstery ; red with red, black or silver wheels, red upholstery. Chromium plated fittings.

Overall length, 12 ft. 2 ins. ; Overall width, 4 ft. 9 ins. ; Height over hood, 4 ft. 7 ins. ; Turning circle, 40 ft. ; Weight approx., 12½ cwt.

£167. 10s.

Ex Works



The B.S.A. SCOUT

10 h.p. Coupé

Low-built, two-seater coupé, air line body designed to give the minimum of wind resistance. Bench type seat with adjustment to back. Upholstered in real leather. Large luggage space behind seat. Sliding roof. Safety glass windows. Single panel safety glass windscreen with central handle operated chain type opener. Low bonnet line giving maximum driving vision. Rear petrol tank. Rear blind controlled from driving seat. Flush fitting traffic indicators.

Interior rear view mirror. Roof light. Door locks. Ventilators in scuttle sides. Facia board with large instrument panel on driver's side and a large cubby hole on left. Full set of instruments including petrol gauge and clock with indirect illumination. Metal spare wheel cover.

Finish : all black with red or green upholstery and black, red, green or silver wheels ; all green with green upholstery and green, black or silver wheels ; all red with red upholstery and red, black or silver wheels. Chromium plated fittings.

Overall length, 11 ft. 8 ins. Overall width, 4 ft. 9 ins. Height, 4 ft. 6 ins. Turning circle, 40 ft. Weight approximately, 14 cwts.

£185

Ex Works

The B.S.A. Scout

Specification

ENGINE. Four-cylinder, water-cooled; side valve high-efficiency detachable head block; 9 h.p., 60 mm. x 95 mm. bore and stroke (1,075 c.c.). Treasury rating, 8.9 h.p., Tax, £6. 15s.; 10 h.p. 63.5 mm. x 95 mm. bore and stroke (1,203 c.c.). Treasury rating, 9.8 h.p., Tax, £7. 10s. Large diameter two-bearing crankshaft, short and free from whip, mounted on ball and roller journal bearings. Cylinder block and crankcase in one casting, ensuring greater rigidity and perfect alignment. Silent timing gear with wide cams on large diameter camshaft, driven from crankshaft by duplex chain.

LUBRICATION. Gear type pump driven by skew gears from camshaft. Pump draws oil from engine sump (capacity one gallon) and delivers it under high pressure to the big-end bearings, through the hollow crankshaft, and also to the tappet gallery, where lubrication is provided for the tappets, cams, and camshaft bearings. Oil pressure gauge on instrument panel.

CARBURETTER. Solex self-starting carburetter with easy starting control operated from instrument panel. Mechanically operated fuel pump drawing from large tank at rear of body.

CLUTCH. Multiplate type, having two light alloy discs with cork inserts, running in oil. Particularly sweet in action, entirely free from slip, and owing to its light weight, ensuring very rapid gear-changing.

GEARBOX. B.S.A. three-speeds and reverse; special alloy steel used for all gears. Gear ratios at driving wheels: Third, 5.2. Second, 7.8. First 17.2. Reverse, 20.8 to 1.

TRANSMISSION. Drive from gearbox to front wheels through a short stiff shaft to high-efficiency worm and spur differential. Propeller shafts from differential through flexible fabric joints and specially enclosed universal joints.

CHASSIS FRAME. Of conventional design, having high-grade steel channel section side members suitably braced by cross members.

SUSPENSION. Front suspension by eight quarter-elliptic springs, four to each wheel, the wheels being independently sprung. Rear wheels suspended on semi-elliptic springs. Shock absorbers to all wheels.

BRAKING. Front wheel braking by drum coupled to differential. The retarding effort is thus balanced between the two wheels in the same manner as the drive—an arrangement which provides maximum braking efficiency. One brake to each rear wheel. All brakes are operated simultaneously by the brake pedal, a special form of coupling being provided which permits quick and separate adjustment of front and rear brakes. The hand brake lever operates the rear brakes only.

WHEELS. Five wire wheels equipped with 4.50 — 18 (4.00 displacement) Dunlop Tyres.

CONTROLS. Central gear lever conveniently placed well forward. Hand brake lever on right, applied when pushed forward, thus allowing free entrance through the offside door. Central pull-up hand lever on 10 h.p. models.

GENERAL EQUIPMENT. Licence holder; driving mirror; complete set of tools, including jack, grease gun, wheel brace, and tyre inflator; spare wheel, complete with tyre; Smith-Jaeger speedometer. Front bumper, with special spring mounting.

ELECTRICAL EQUIPMENT. Lucas equipment throughout. Coil ignition with automatic spark advance. Five lamp set with dip and switch control to headlights. Six-volt system with dynamo, self-starter, and large capacity battery, windscreen wiper and horn.

PETROL TANK. Mounted at rear, with quick-action filler cap. Capacity approximately 10 gallons. 6 gallons on four-seater and coupé. Two-level petrol tap giving a reserve supply of approx. 1½ gallons on the two-seater models.

B.S.A. CYCLES LTD., Birmingham, 11

Directors: A. E. Berriman. J. W. Bryan. G. D. Burton. W. F. Janes. J. Leek. A. H. Pollen.

B.S.A. Cycles Limited reserve the right to alter the designs or any constructional details of their manufactures at any time without giving notice. All orders charged for at prices ruling at time of delivery.

Conditions of Sale.

- 1.—Delivery is made at the Company's Works at Small Heath, Birmingham. Every endeavour is made to meet the wishes of Purchasers but delivery on a specified date cannot be guaranteed. Should the Vendors be prevented from making delivery owing to any act of God, strikes, lockouts, combinations of workmen, accidents, riots, fire, existence of war, or any cause whatever beyond their control (whether *ejusdem generis* or not) or should B.S.A. Cycles Limited supersede or alter or abandon the design or type of car or chassis contracted for, the Vendors shall be at liberty either to cancel or suspend the agreement or to supply to the Purchaser the equivalent type of car or chassis current at the agreed time of delivery without incurring any liability for any loss or damage which may arise to the Purchaser therefrom.
- 2.—Should the Purchaser not pay the Vendors for the car and/or chassis on due date, the Vendors may, unless otherwise mutually arranged, resell the same at any time after ten days' notice, and any loss sustained shall be repaid to the Vendors by the Purchaser.
- 3.—If before delivery the Vendors' prices for the car and/or chassis shall be increased or decreased the altered price shall be deemed to be substituted for the price mentioned.
- 4.—Any contract of sale may be declared by the Vendors to be at an end if at any time the name of the Purchaser shall appear in the "Stop List" of the Motor Trade Association or if he commits any breach of any of these conditions, or becomes bankrupt, or compounds, or makes any arrangements with his creditors or if, being a limited company, such company goes into liquidation, whether compulsory or voluntary, or has a Receiver appointed of its assets. In any such case the Vendors may resell the car and/or chassis and any loss sustained shall be repaid to the Vendors by the Purchaser.
- 5.—The relationship between B.S.A. Cycles Limited and/or the Vendors and motor traders (notwithstanding that they are known in the trade as "Agents") is that which exists between Vendor and Purchaser and is not that which exists between principal and agent.
- 6.—The car and/or chassis shall not without the written permission of the Vendors be exhibited at any exhibition in the United Kingdom of Great Britain and Ireland other than any exhibition held by the Society of Motor Manufacturers and Traders Limited or approved of by that Society for the exhibition of motor vehicles and goods by its bond-signers. In case of any breach of these provisions the Purchaser shall pay to the Vendors for every such breach the sum of £250 (two hundred and fifty pounds) as ascertained and liquidated damages which it is agreed the Vendors would sustain or such other sum as the Vendors may be ordered to pay by the Society of Motor Manufacturers and Traders Limited. Any sum due in respect of such damages may be assigned by the Vendors to anyone.
- 7.—The Purchaser shall not without the written consent of the Vendors either (a) resell the new car and/or new chassis to any trader or (b) resell the new car and/or new chassis by way of export from the United Kingdom.
- 8.—The Purchaser agrees to communicate to the Vendors the name of the sub-purchaser of the vehicle if and as soon as a resale is definitely concluded.
- 9.—In the event of the Purchaser reselling to a private person a new car and/or a new chassis he shall not sell at less or more than the retail price in B.S.A. Cycles Limited price list or catalogues current from time to time. The Vendors reserve the right to report such cases as come before their notice to the Motor Trade Association for such action as the latter body may think fit to take, and in the event of the Purchaser not being at the time of the resale a member of the Motor Trade Association, to impose on their own behalf such penalty as would have been imposed had the Purchaser been enjoying such membership.
- 10.—The Purchaser shall only resell the vehicle or goods subject to all these conditions.
- 11.—If a customer's car shall be driven at any time by one of the Vendors' employees the employee shall be deemed for all purposes to be the servant of the customer, who shall be entitled to all rights and shall discharge all liabilities incident to that relationship.
- 12.—The Purchaser does not rely on the skill or judgment of the Vendors, but buys the car as it is without warranty as to quality, fitness, merchantableness, or description (subject only as below) and all implied warranties, conditions and liabilities which exist either by Common Law, Statute or otherwise, are excluded.
- 13.—The guarantee of B.S.A. Cycles Limited on the chassis (and on the body if of B.S.A. Cycles Limited manufacture) forming part of their conditions of sale, is transferred to the Purchaser or sub-purchaser. This guarantee is set out in Clauses 14 to 18 below.
- 14.—If within six calendar months from the date when the car and/or chassis first left the Works of B.S.A. Cycles Limited at Birmingham any defect is alleged by the owner in materials or workmanship (except in materials or workmanship used in the painting, varnishing, enamelling, upholstery, or in any other work used in the decoration of the car and/or chassis as to which no guarantee is given) B.S.A. Cycles Limited undertake that on the immediate return of the part which is alleged to be defective carriage paid to their Works at Birmingham they will examine the same and should any fault be found by B.S.A. Cycles Limited on examination to be solely due to defective material or workmanship B.S.A. Cycles Limited will repair the defective part or supply a new part in place thereof free of charge and send the same to the owner carriage forward.
- 15.—If B.S.A. Cycles Limited makes either at the request of the owner or otherwise any alteration in or addition to the car and/or chassis or finally aligns and tests the complete car after fitment with a body by another coachbuilder or (whether liable to do so or not) repairs or replaces any part or parts either gratuitously or for a special price then such alterations additions alignments and tests and such repaired or replaced parts shall come within the terms of the guarantee (all the aforesaid conditions warranties and liabilities mentioned in clause 12 being excluded) and the guarantee as to alterations additions alignments and tests and as to parts which have been repaired or replaced shall commence from the date mentioned in and shall run concurrently with and terminate on the same date as the guarantee given under clause 14.
- 16.—The responsibility of B.S.A. Cycles Limited is limited to the terms of the said guarantee and they shall not be answerable for any contingent or resulting liability or loss arising through any defect or for any claims for labour material or other expenditure incurred in remedying any defect.
- 17.—While B.S.A. Cycles Limited desire to meet the wishes of their customers as to detail yet they reserve the right to set their own standard of the functioning of every part of the car and/or chassis and give no guarantee as to performance or as to the matching of any particular colours, upholstery or decoration and the above guarantee as to materials and workmanship shall not nor shall the conditions warranties or other liabilities which are hereby excluded apply to defects caused by racing, wear and tear, improper adjustment, dirt, misuse, accident, or negligence, and such guarantee shall cease to apply (without prejudice to the exclusion of all such conditions warranties and liabilities as mentioned in clause 12) (1) if the identification numbers on the car and/or chassis have been altered or removed or (2) if the car and/or chassis has been let out on hire or (3) if the part or parts has or have been repaired by any other person firm or company other than B.S.A. Cycles Limited without B.S.A. Cycles Limited written consent or (4) if the chassis is fitted by the Purchaser with a body for which such chassis is not designed or if the total weight of the complete car with equipment and passengers has at any time exceeded a weight to be specified by B.S.A. Cycles Limited or (5) if the car and/or chassis has been sold as a new vehicle by any agent or for dealer in motor vehicles to any person (not being an agent for or dealer in motor vehicles, at less than the full retail price set out in B.S.A. Cycles Limited price list current for the time being).
- 18.—The above guarantee shall not apply to any parts of the car and/or chassis which are not manufactured by B.S.A. Cycles Limited or any of its Allied Companies and all conditions warranties and liabilities whatsoever which exist either by Common Law Statute or otherwise relating to such parts are hereby excluded but B.S.A. Cycles Limited and the Vendors shall give to the owner the benefit of any guarantee given to them by the manufacturer of such parts as shall not have been manufactured by B.S.A. Cycles Limited.