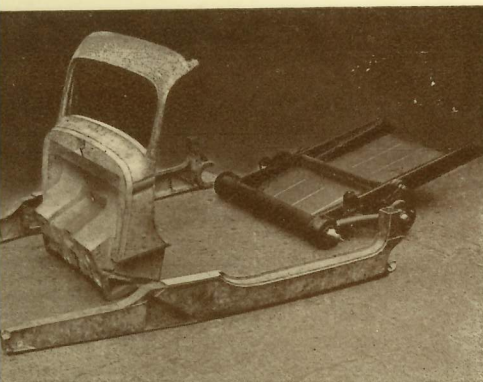
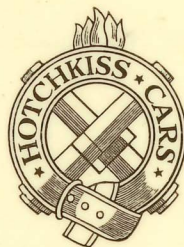


THE 1939 10 H.P. HOTCHKISS £260



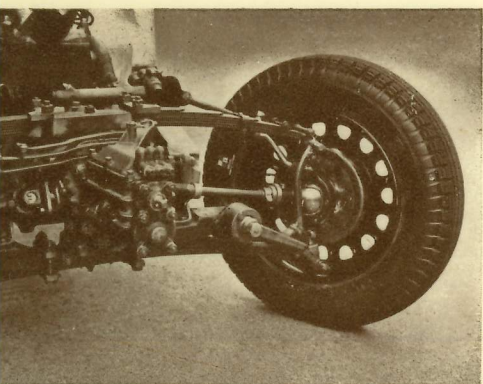
BRIEF SPECIFICATION

4 cyl. 63 x 95 mm.
1185 c.c. RAC rating.
10 h.p. Tax £7.10.0.
Wheelbase 8' 2".
Track 4' 1".
Tyres 5.00 x 15.
Weight :—
2 seater, 13½ cwt.
Saloon, 15 cwt.



PRICES

2 SEATER . . . £250
SALOON . . . £260
CABRIOLET . . £260



Independent front suspension and front wheel constant velocity drive.

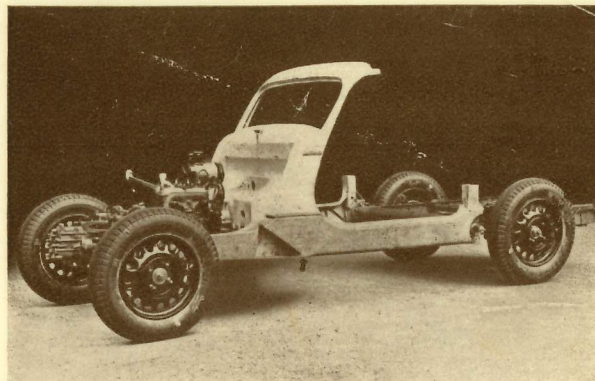
SERVICE

HOTCHKISS SERVICE, LTD., Brent Crescent, North Circular Road, London, N.W. 10. Willesden 3688-3689

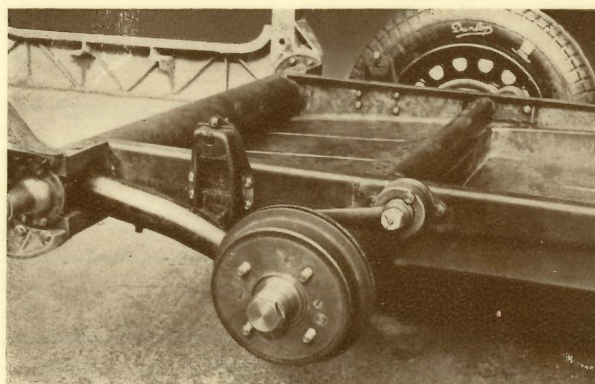
SALES

Sole concessionaires for England, Scotland and Wales:

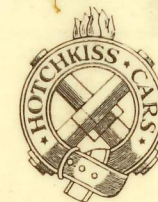
H. M. BENTLEY and PARTNERS, 3, Hanover Court, Hanover St., London, W. 1. Mayfair 3422-3423



An extremely light chassis that is equal in strength to that of an average 2 ton lorry. The very roomy body has adjustable front seats and a large luggage locker with concealed spare wheel.



Independent rear suspension by enclosed torsion bars.



TAMPA BAY
AUTOMOBILE MUSEUM

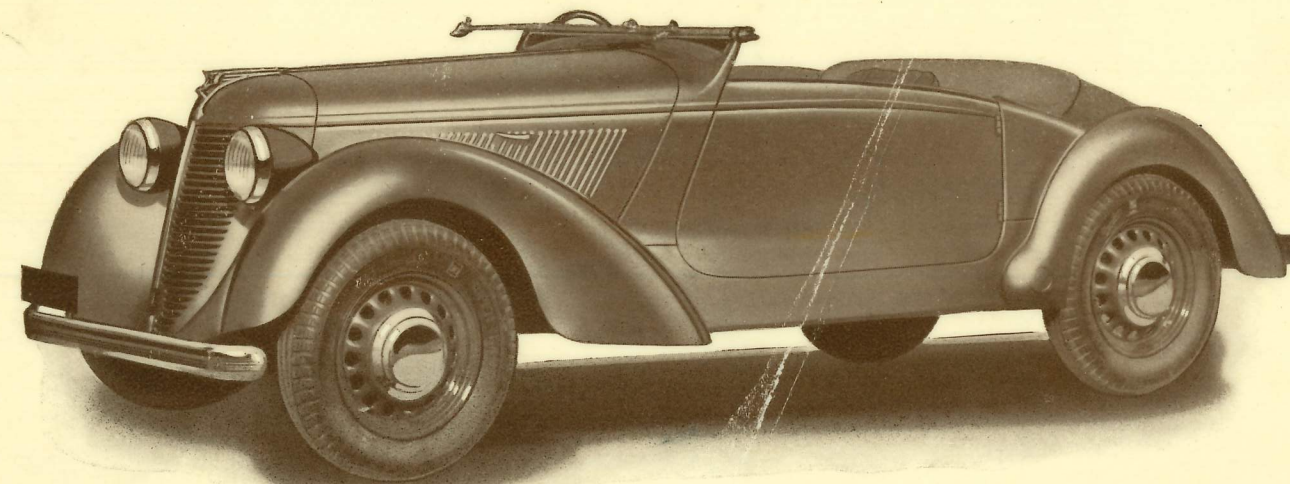


11.8.89

*In 1870 Benjamin Berkley Hotchkiss founded the firm
whose reputation is now world-wide*

THE NEW 10 H.P.

HOTCHKISS



GREATER SAFETY AND UNEQUALLED ROAD-HOLDING