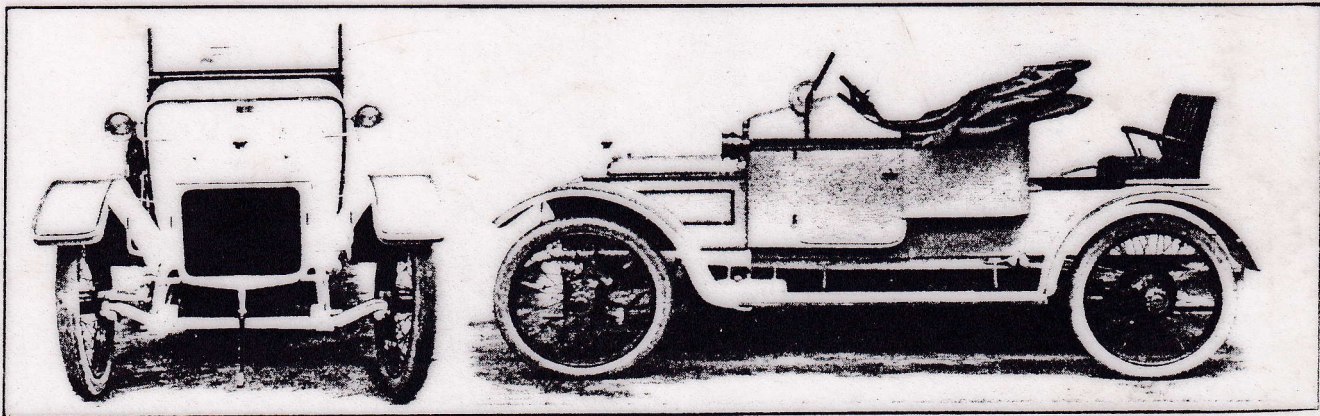


Body Design and Construction.

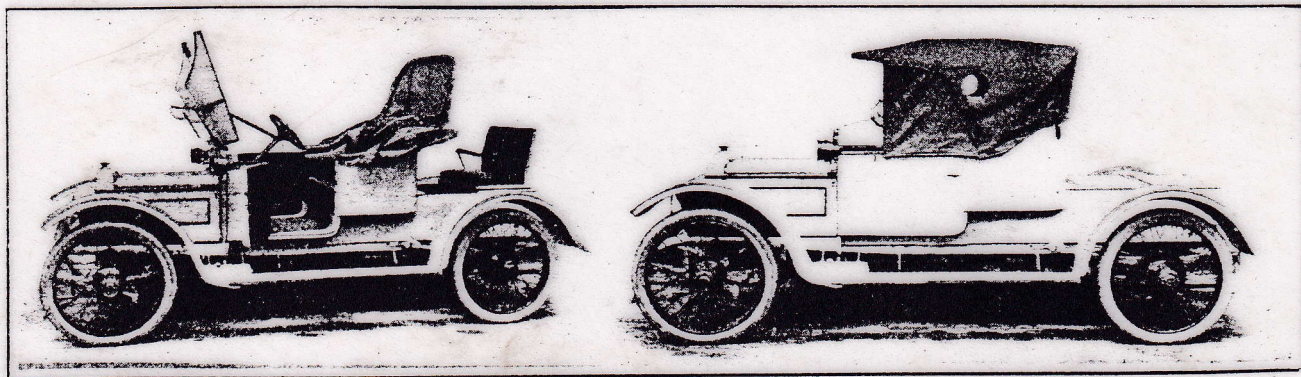
A Large Car with Scuttle Dash.

The four views show a 22 h.p. Daimler which has been fitted with a body on very similar lines to those of Mr. Eric Walford's car, which we described and illustrated on July 24th last. The car is primarily intended for use as a two-seater, but the boot at the rear can be opened up as shown, disclosing a folding seat. The doors to the front seat are very high, and over them is a sheet steel lid or "scuttle," which is hinged so that access to the seats or dashboard is easy. On the scuttle is a hinged screen, and the car is completed by a hood and side curtains. Nothing cosier for two can well be imagined. The

original design was Mr. Walford's, and both his body and the one we now illustrate were built by Hewer's Motor Bodies, Ltd., Coventry. We should add that the vertical panel of the back seat is a feature of this "straight line" design. The idea is that it shall harmonise with the vertical lines of the radiator and dash; also that it shall leave room for an exceptional depth of sprung and stuffed seat back at the lower part to thoroughly support the small of the back, and to insulate the spine from all shock and vibration. Of course, a very similar body could be built with raking and curved lines if preferred.



A 22 h.p. Daimler chassis fitted with an uncommon type of body by Hewer's Car Bodies, Ltd.



Two additional views of the special body illustrated and described on the preceding page.