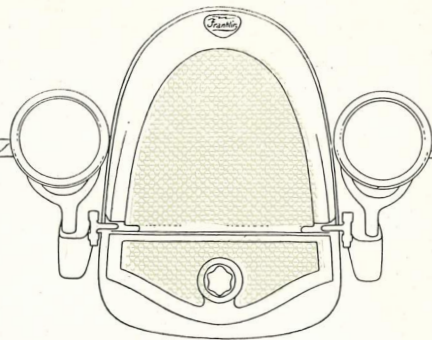




The Franklin Car



The Franklin *Car*



Franklin Automobile Company, Syracuse, N. Y.



The Franklin Touring Car

A FULL-SIZED, five-passenger car with one-man top and Always Ready curtains of Neverleek fabric.

Removable attachments facilitate opening and closing of doors with curtains in position.

Upholstered in hand-buffed, straight-grain black leather with semi-bright finish.

Color: Body and running gear, Franklin green.

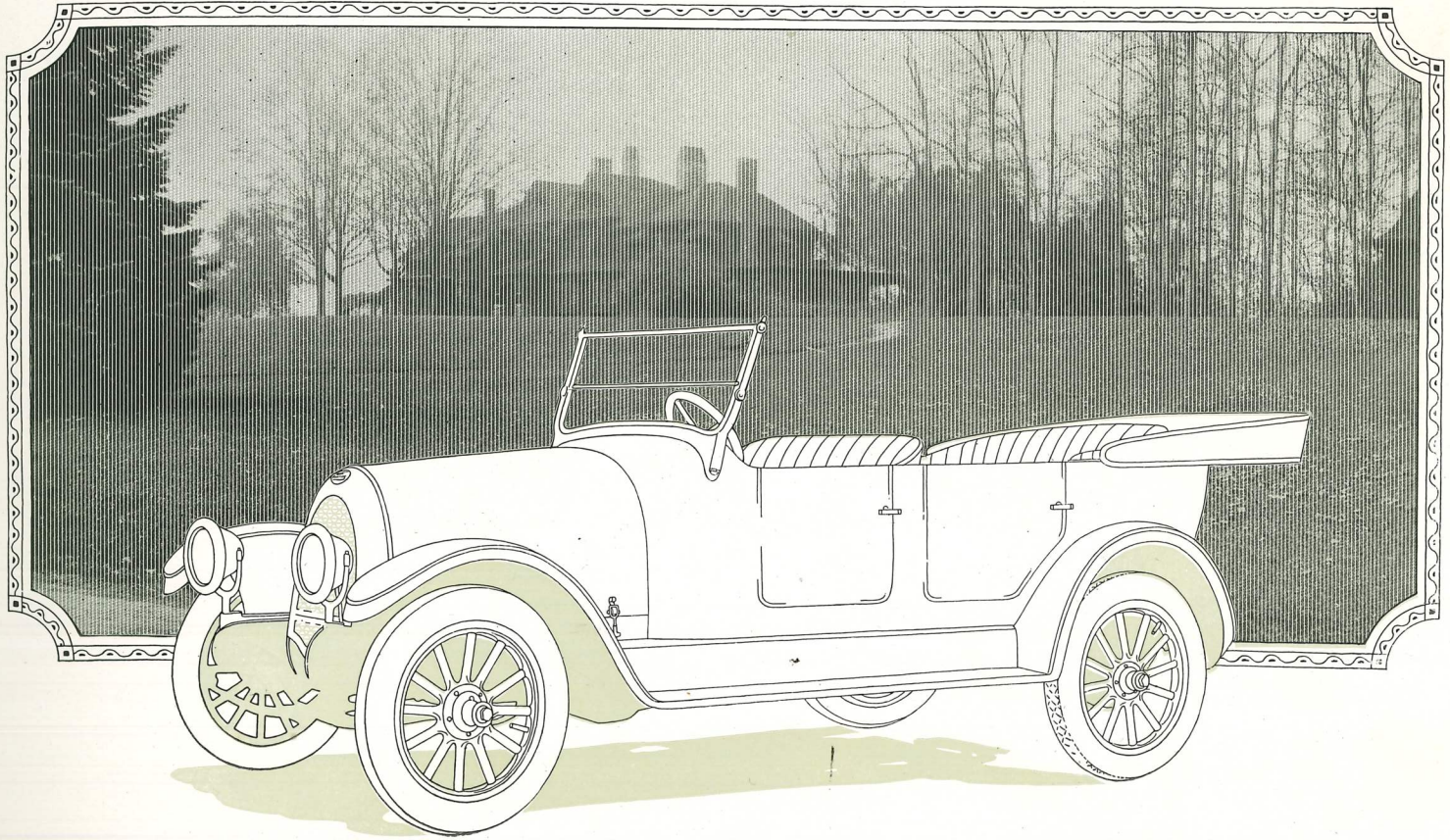
Body and running board shields are of aluminum.

Tonneau light illuminates curb side of compartment at night.

Adjustable two-glass windshield, slanting type, with one-piece standards.

Provision is made for securing luggage trunk to running board.

Goodyear cord tires. Weight, 2445 pounds.





The Franklin Four Passenger Roadster

A COMPACT four-passenger car with one-man top and Always Ready curtains of Neverleek fabric.

Removable attachments facilitate opening and closing of doors with the curtains in position.

Front seats are Pullman swiveling and tilting type, that permit free access to the passenger compartment.

Upholstered in hand-buffed, straight grain black leather with semi-bright finish.

Color: Body, Franklin gray; axles, black.

Body and running board shields are of aluminum.

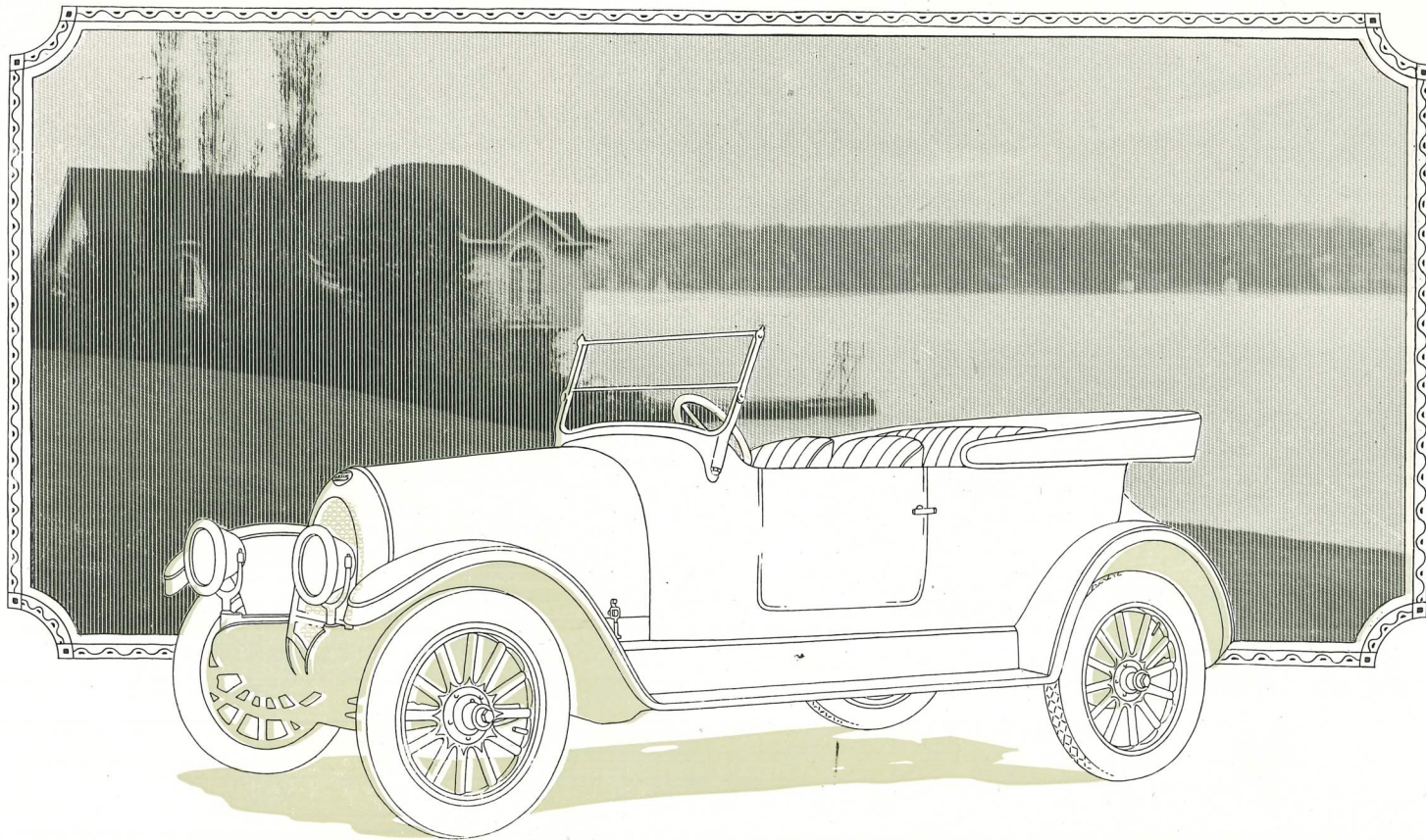
Body designed so that a light detachable winter top can be fitted.

A hamper of useful size in rear of body.

Adjustable two-glass windshield, slanting type with one-piece standards.

Provision is made for attaching luggage trunk on running board.

Goodyear cord tires. Weight 2450 pounds.





The Franklin Runabout

A TWO-PASSENGER car with one-man top and Always Ready curtains of Neverleek fabric.

Removable attachments facilitate opening and closing of doors with the curtains in position.

Upholstered in hand-buffed, straight grain black leather with semi-bright finish.

Color: Body and running gear, Franklin green.

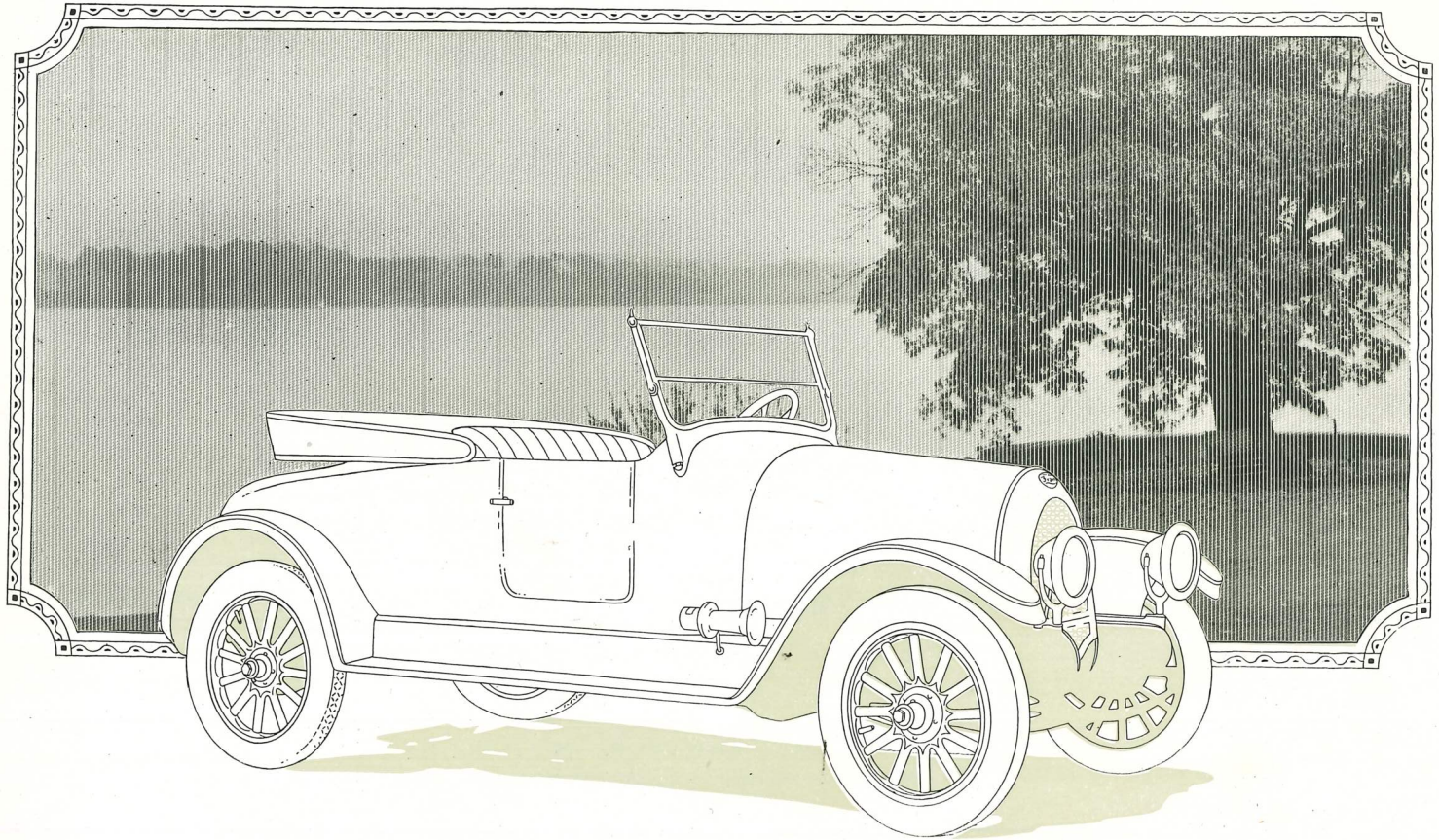
Body and running board shields are of aluminum.

Large, roomy hamper in rear of body, and small package compartment in back of seat.

Adjustable two-glass windshield, slanting type, with one-piece standards.

Provision is made for attaching luggage trunk to running board.

Goodyear cord tires. Weight, 2320 pounds.



The Franklin Sedan

A FINE, five-passenger enclosed car of broad and practical usefulness.

Front seats of the Pullman swiveling and tilting type.

Upholstered in neutral green broadcloth, with silk shades to match.

Dull platinum trimmings of exclusive design.

Color, Franklin green for body and chassis, black for superbody.

Interior appointments consist of window regulators, coat hooks, dome light of tinted glass,

grab handles, robe cords, hand mirror and silk shades.

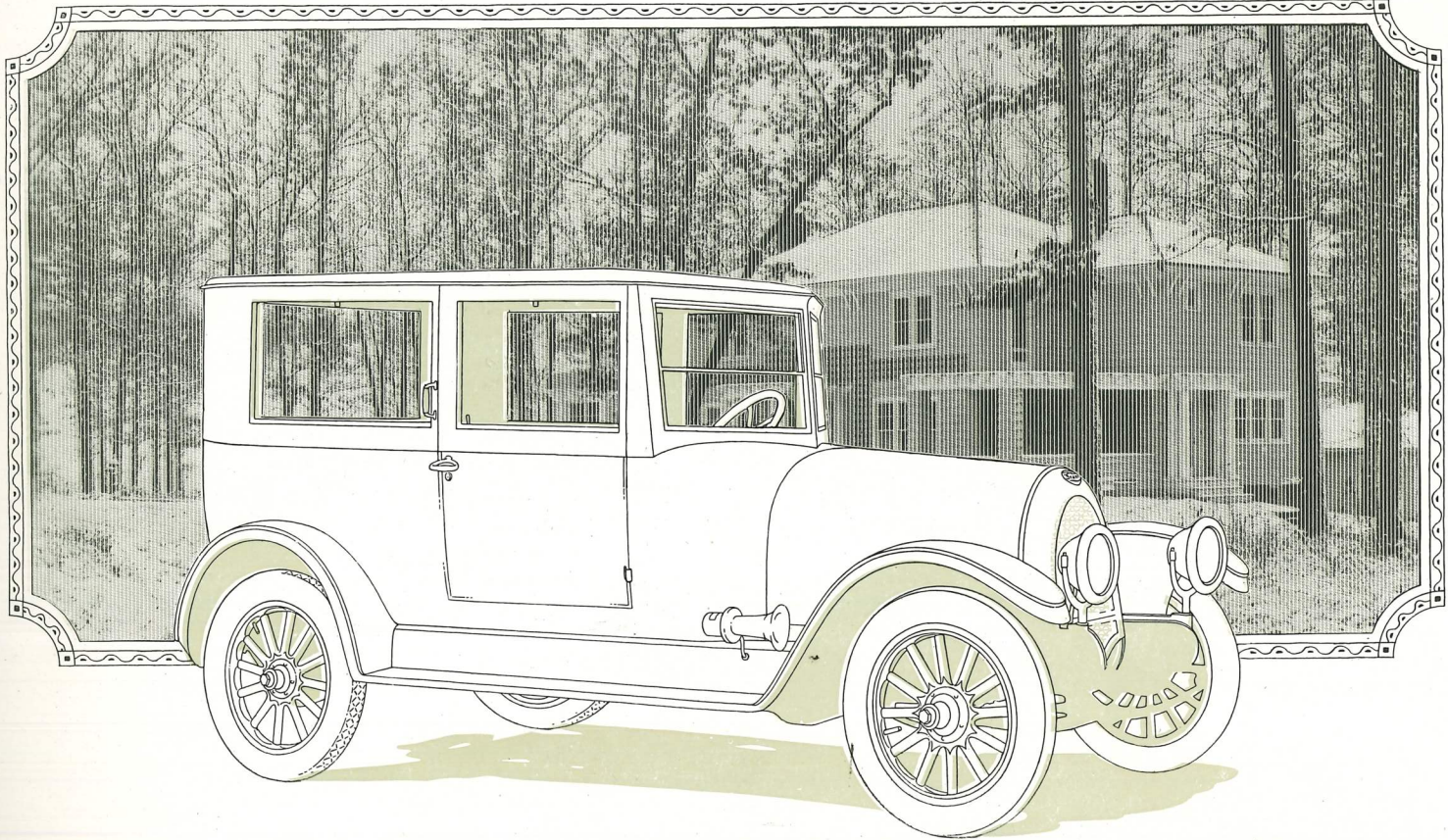
Body and running board shields are of aluminum.

Rothchild body panel construction that dispenses with all joint moldings.

Body built with slanting V-front, composed of two adjustable windshields, affording wide and unobstructed vision and the least wind resistance.

Provision is made for securing luggage trunk to running board.

Goodyear cord tires. Weight 2770 pounds.



The Franklin Brougham

AN ENCLOSED car accommodating four passengers, suitable for personal driving because of close-coupled seating arrangement.

Front seats of the Pullman swiveling and tilting type.

Upholstered in neutral green broadcloth, with silk shades to match.

Dull platinum trimmings of exclusive design. Color, Franklin green for body and chassis, black for superbody.

Interior appointments consist of window regulators, coat hooks, dome light of tinted glass, robe cords, hand mirror and silk shades.

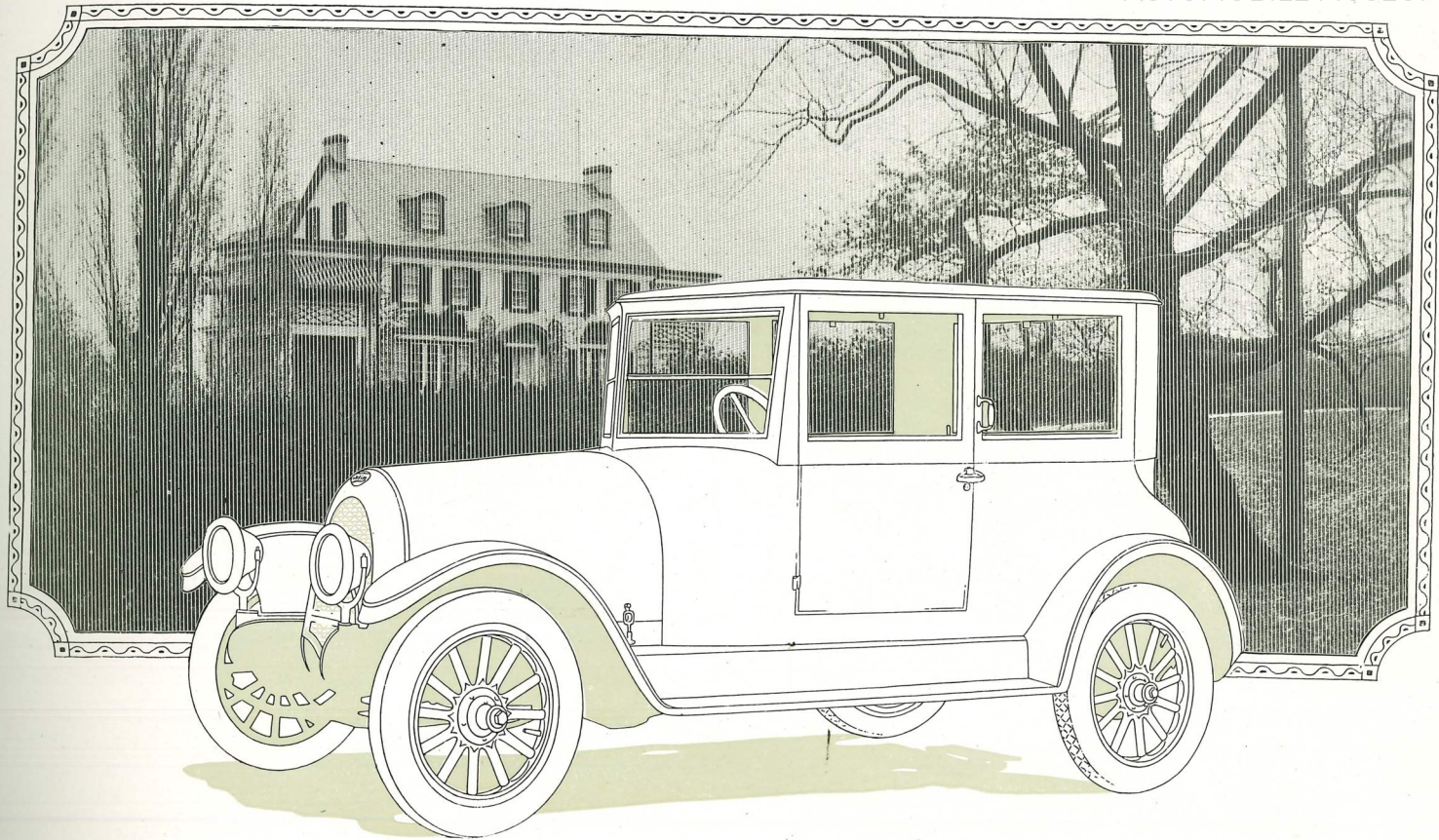
Body and running board shields are of aluminum.

Rothchild body panel construction that dispenses with all joint moldings.

Body built with slanting V-front, composed of two adjustable windshields, affording wide and unobstructed vision and the least wind resistance.

Provision is made for securing luggage trunk to running board.

Goodyear cord tires. Weight, 2720 pounds.





The Franklin Demi-Coupe

A TWO-PASSENGER convenience car readily adaptable as an enclosed or open model by adjustment of glass panels.

Permanent top of Cobra grain Craftsman Fabrikoid, with ventilator in rear of roof.

Equipped for summer driving with side curtains which fit into envelope and are stored under seat when not in use.

Upholstered in hand-buffed, straight-grain black leather with semi-bright finish.

Color, Franklin green for body and chassis; black for top structure.

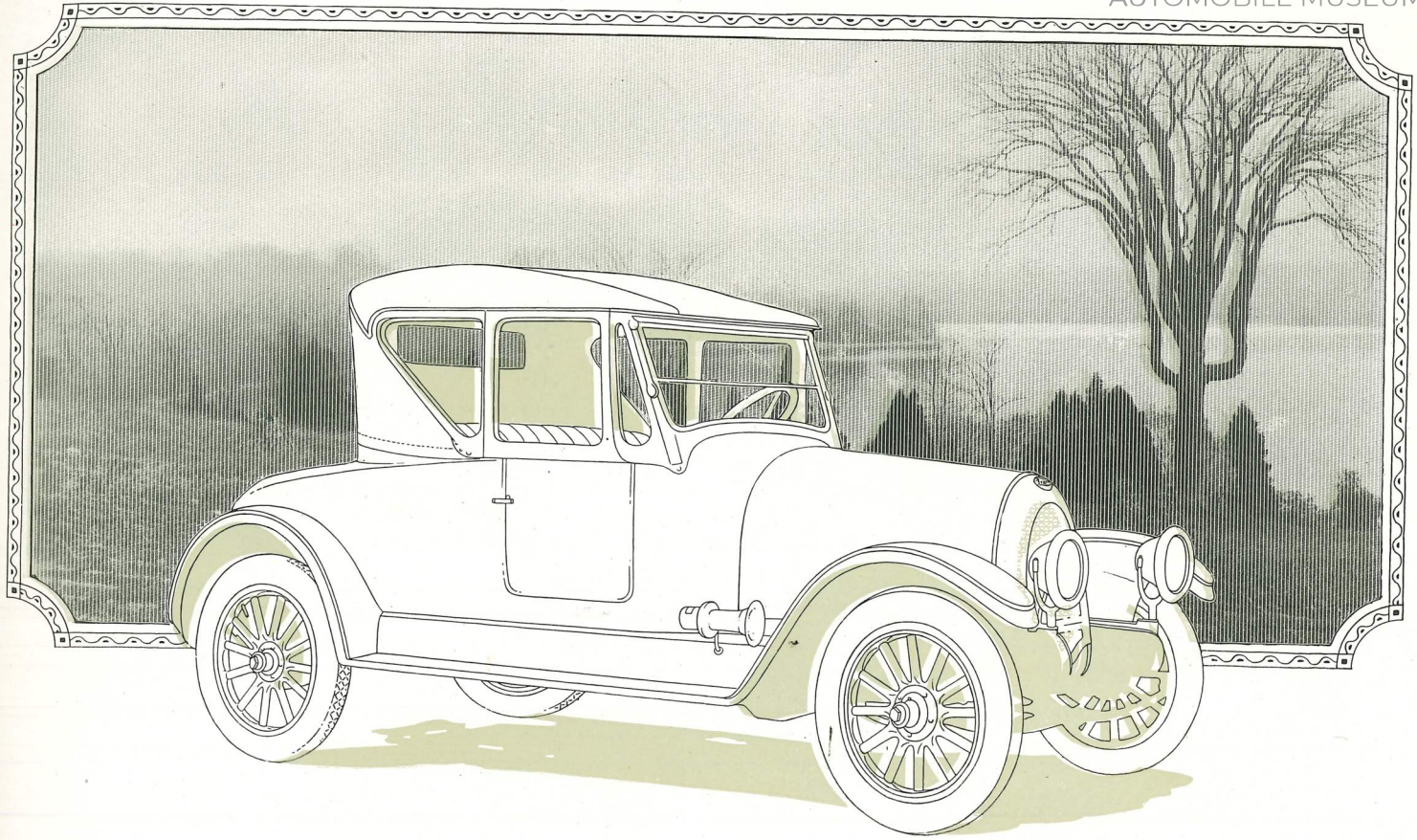
Body and running board shields are of aluminum.

Adjustable two-glass windshield of slanting type, with one-piece standards.

Sliding split glass in left door.

Provision is made for securing luggage trunk on running board.

Goodyear cord tires. Weight, 2455 pounds.





The Franklin Demi-Sedan

AN ALL-PURPOSE five-passenger car readily convertible from an enclosed to an open model by removal of glass panels.

Permanent top of Cobra grain Craftsman Fabrikoid, with ventilator in rear of roof.

Equipped for summer driving with side curtains which fit into envelope and are stored under seat when not in use.

Upholstered in hand-buffed, straight grain black leather with semi-bright finish.

Color, Franklin green for body and chassis; black for top structure.

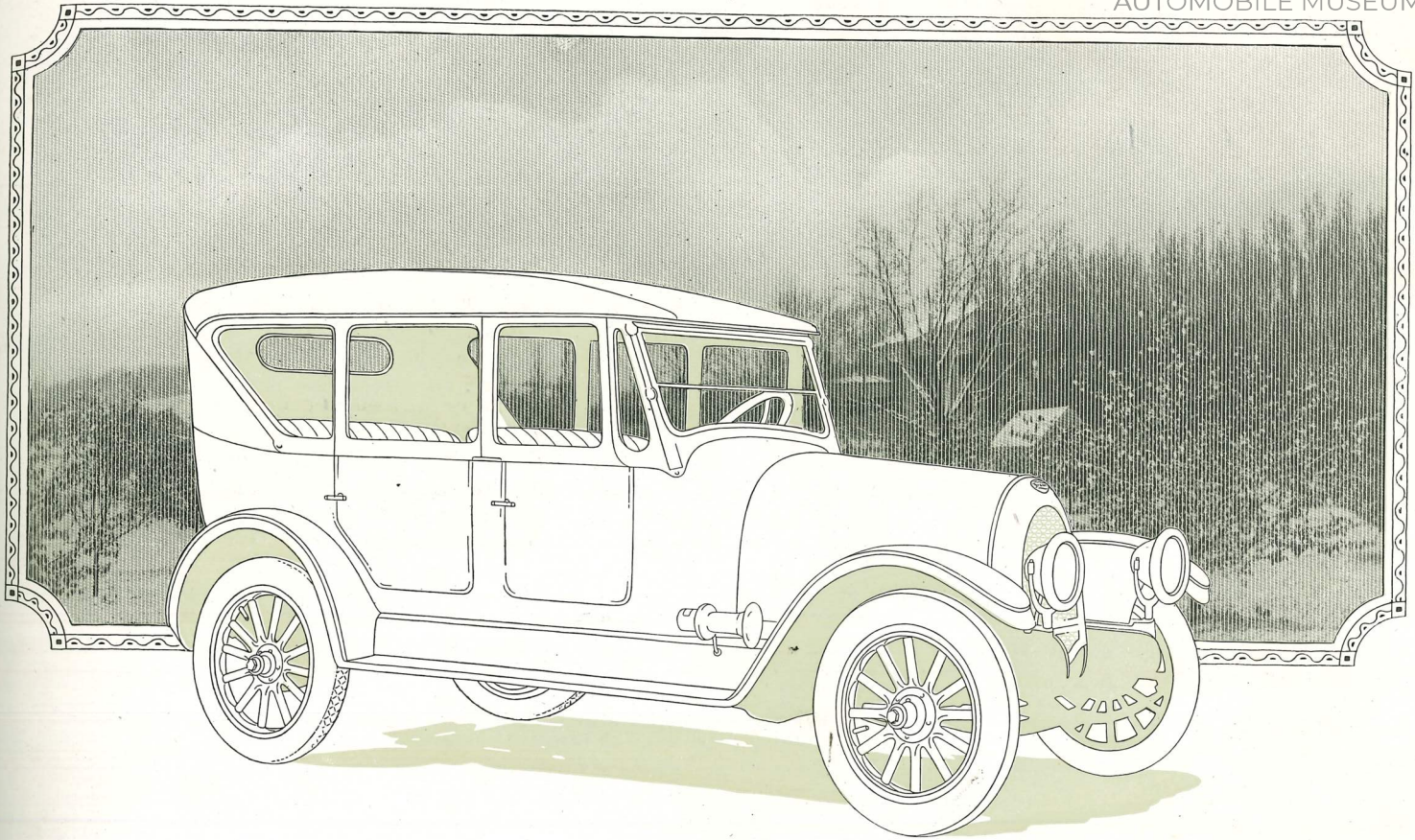
Body and running board shields are of aluminum.

Adjustable two-glass windshield, slanting type, with one-piece standards.

Sliding split glass in left front door.

Provision is made for securing luggage trunk on running board.

Goodyear cord tires. Weight, 2550 pounds.





Specifications

ENGINE. Horse Power—25.3.

Cylinders—Six, $3\frac{1}{4} \times 4$ inches, cast individually.

Valves—In head, enclosed.

Pistons—Aluminum, Long type.

Crank Shaft Bearings—Seven, plain.

Cooling—Air-cooled by direct application of separate currents of air to each cylinder.

Oiling—Force feed, recirculating type.

Oil Capacity— $1\frac{1}{2}$ gallons.

Ignition System—Atwater-Kent, with tungsten breaker points.

Control—Throttle control by lever at top of steering post; also foot accelerator. Spark advance automatically regulated.

CLUTCH. Type—Borg & Beck, single plate, dry disc.

TRANSMISSION. Type—Selective. Three forward speeds and reverse.

DRIVE. Rear Axle Gear Reduction—4-1-3 to 1.

AXLES. Front—Tubular, 100% Radio Thrust ball bearings.

Rear—Semi-floating. Spiral bevel gear and pinion of nickel steel.

WHEELS, TIRES. Open and Enclosed Cars—Front and Rear Tires, 32×4 inches. Goodyear cord.

Rims—Quick-detachable. Goodyear, straight side.

SPRINGS. Type—Full-elliptic front and rear.

Dimensions— $36 \times 1\frac{3}{4}$ inches, front; $38 \times 1\frac{3}{4}$ inches, rear.

BRAKES. Service—Double-acting, contracting band brake on transmission brake drum.

Emergency—Double-acting, contracting band brakes on rear wheel brake drums.

STEERING. Type—Worm and gear.

Location—Left, with center control.

WHEEL BASE. Length—115 inches.

Tread—56 inches.

GASOLINE TANK. Location—Rear of frame. Stewart Vacuum System feed.

Capacity— $13\frac{1}{2}$ gallons, total. Main, 12 gallons; reserve, $1\frac{1}{2}$ gallons.

BODY. Material—Sheet aluminum on second growth ash framework.

Top—Open cars equipped with one-man top and Collins Always Ready cur-

tains, with door curtain openers. Also ironed to receive light demountable winter top. Top envelope furnished at extra cost.

ELECTRIC STARTER. Dyneto direct-connected lighting and starting unit.

ELECTRIC LIGHTING. Open Cars—Electric headlights, tail light, inspection light, instrument panel light, speedometer light. Tonneau light for Touring Car.

Enclosed Cars—Electric headlight, tail light, inspection light, instrument panel light, speedometer light, and dome light.

EQUIPMENT. Windshield—Adjustable two-glass type with one-piece dropped-forged standards for all open cars. Sedan and Brougham have slanting V-front windshield.

Speedometer—Warner, driven from transmission shaft by worm and gear.

Timepiece—Waltham.

Electric Horn—Klaxon.

Kellogg power tire pump.

Single tire carrier on rear.

Full set of tools, including jack and tire repair kit.